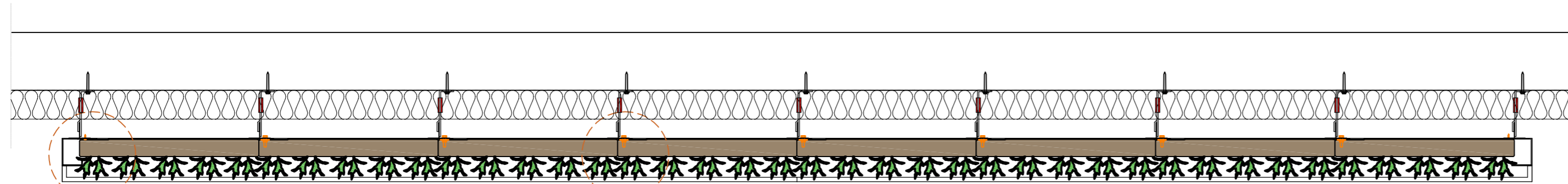
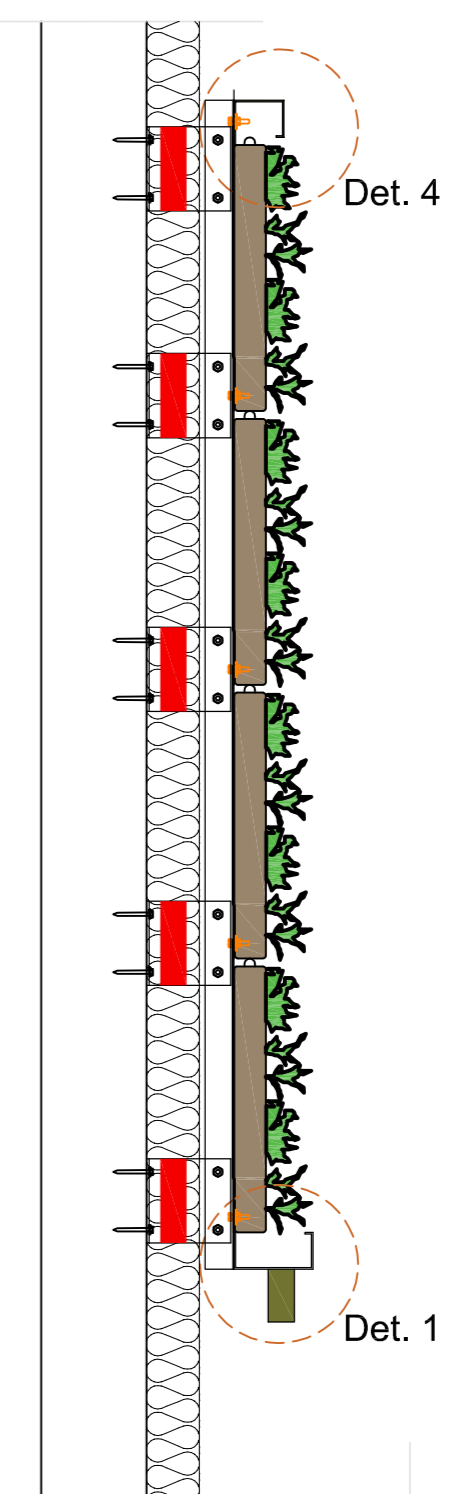


Front view



Section B-B



Section A-A

Cradle to Cradle certified



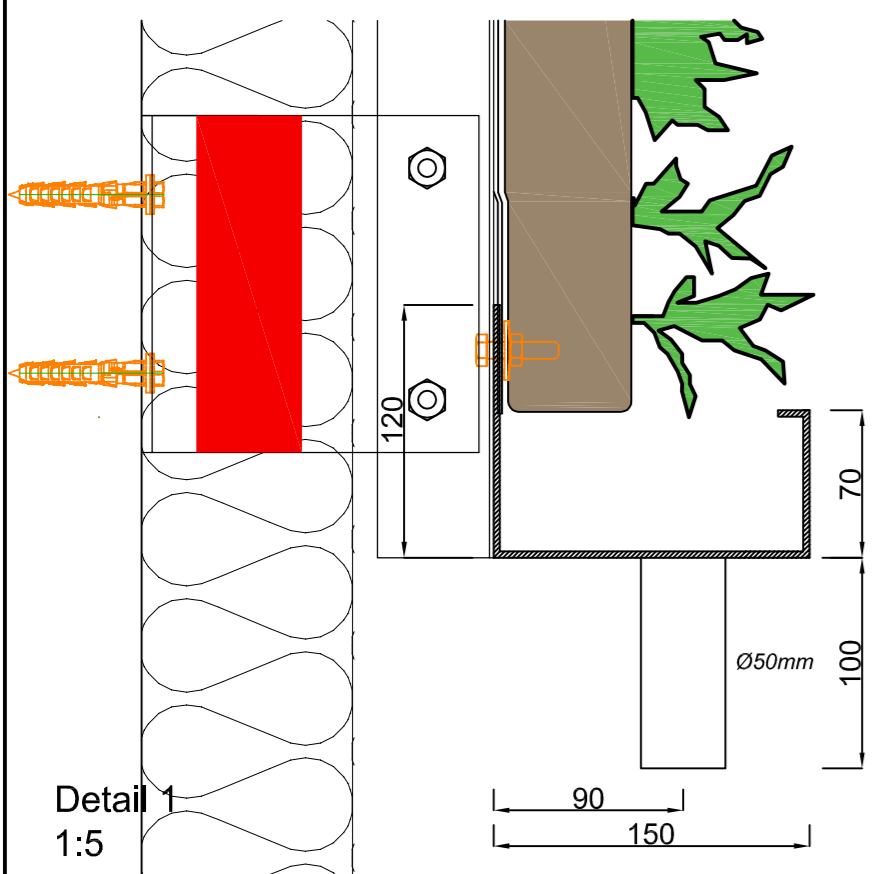
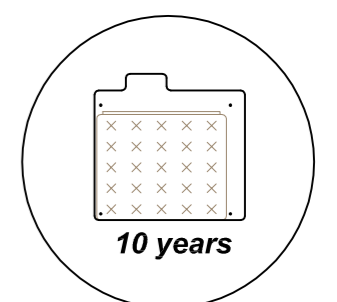
Max. saturated weight



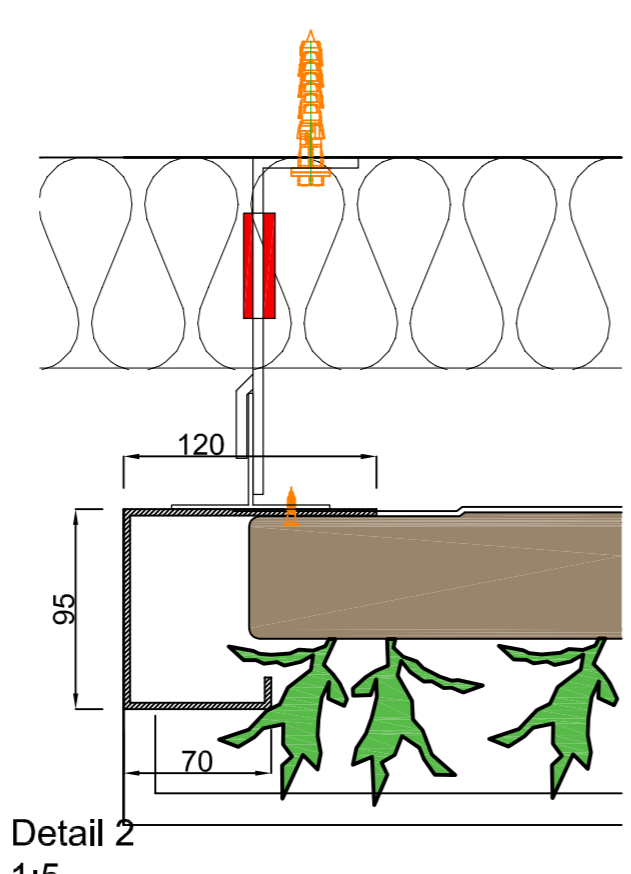
Web-based irrigation system



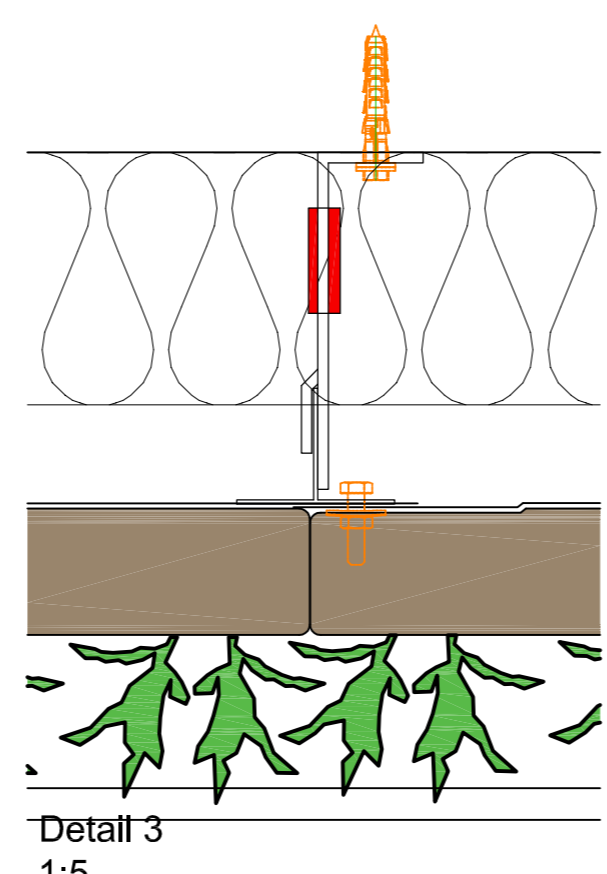
Warranty Flexipanel



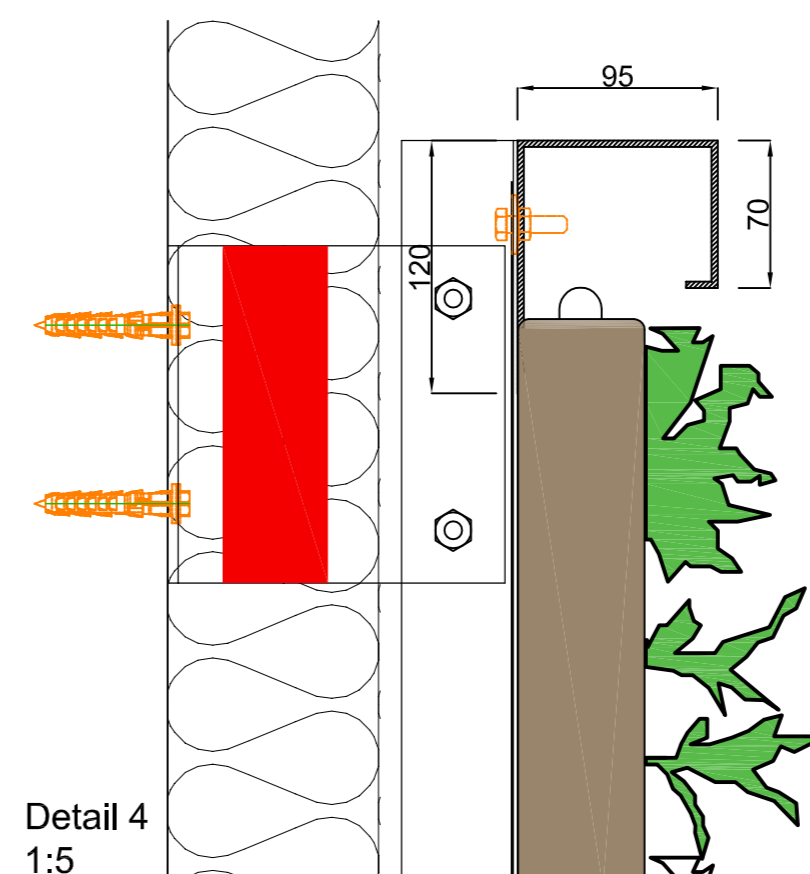
Detail 1: 1:5



Detail 2: 1:5

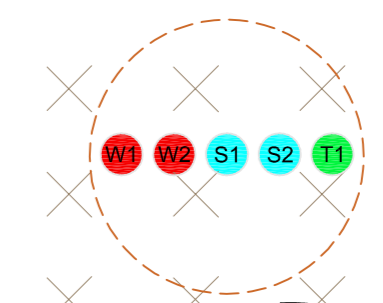


Detail 3: 1:5



Detail 4: 1:5

- water pipe 3/4" female OD Ø20-40mm Pex/Al/Pex
- sensor cable moisture sensor type CY 2 x 0.5-1.0mm²
- sensor cable temperature sensor type CY 2 x 0.5-1.0mm²



Detail A: 1:5

Description
SemperGreenwall Outdoor

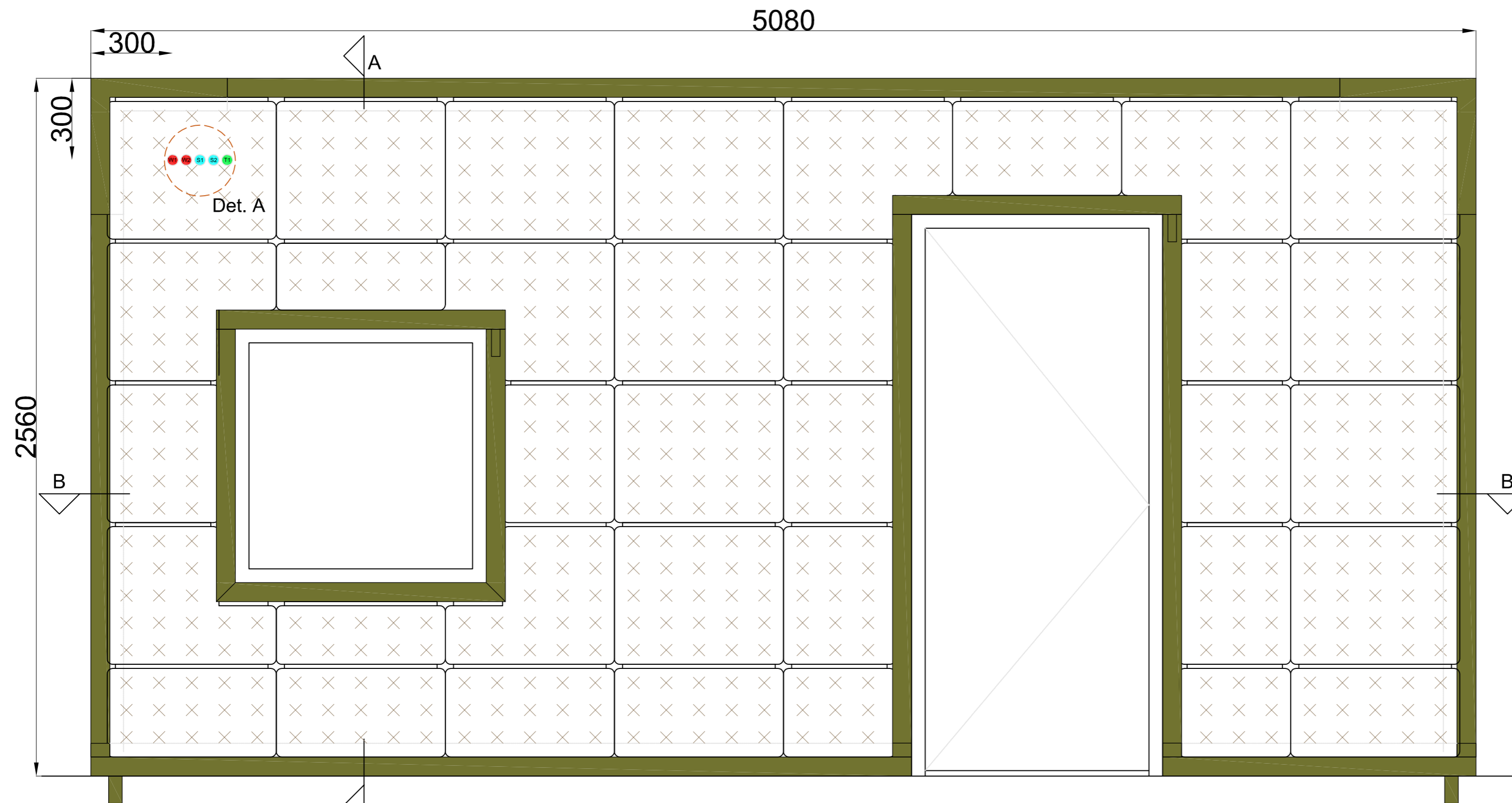
Scale
1:20 / 1:5

Size
A3

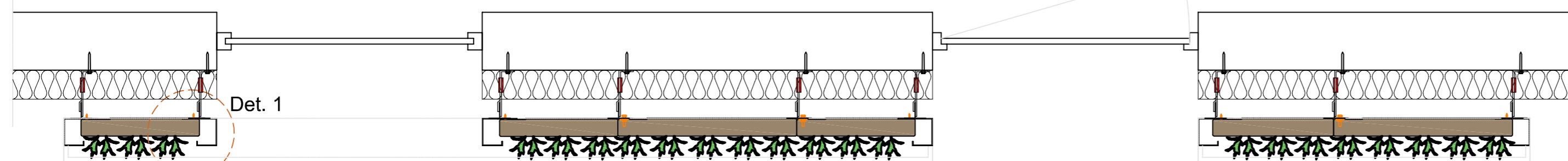
Date
15/05/2023

Drawing no.
SGWO-101

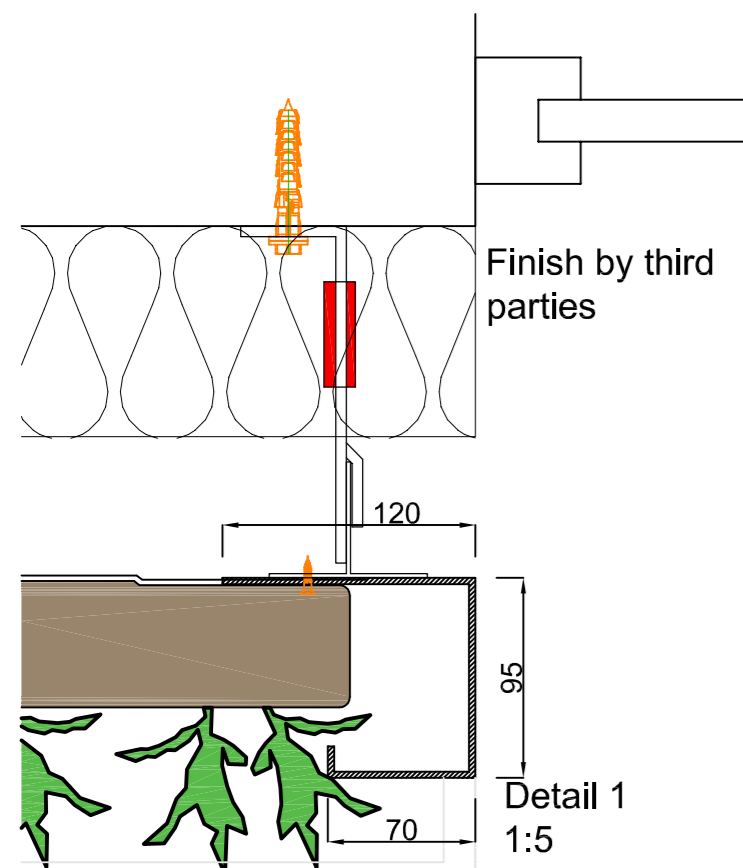




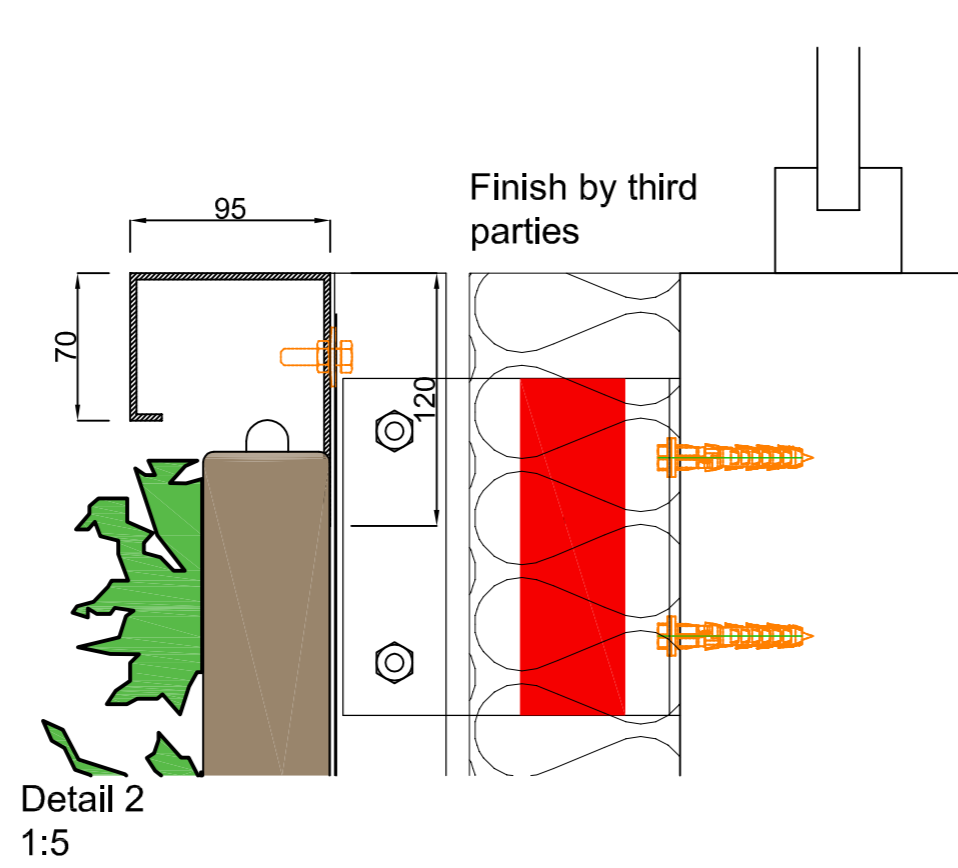
Front view



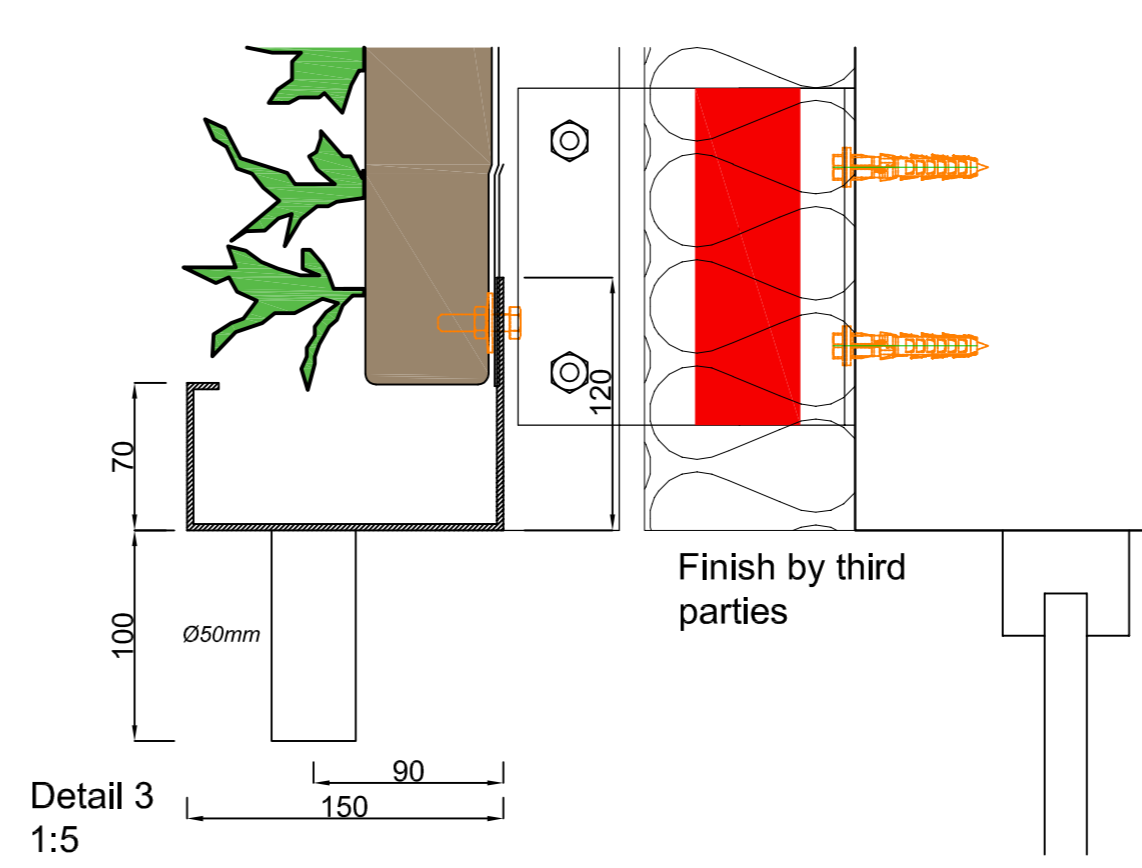
Section B-B



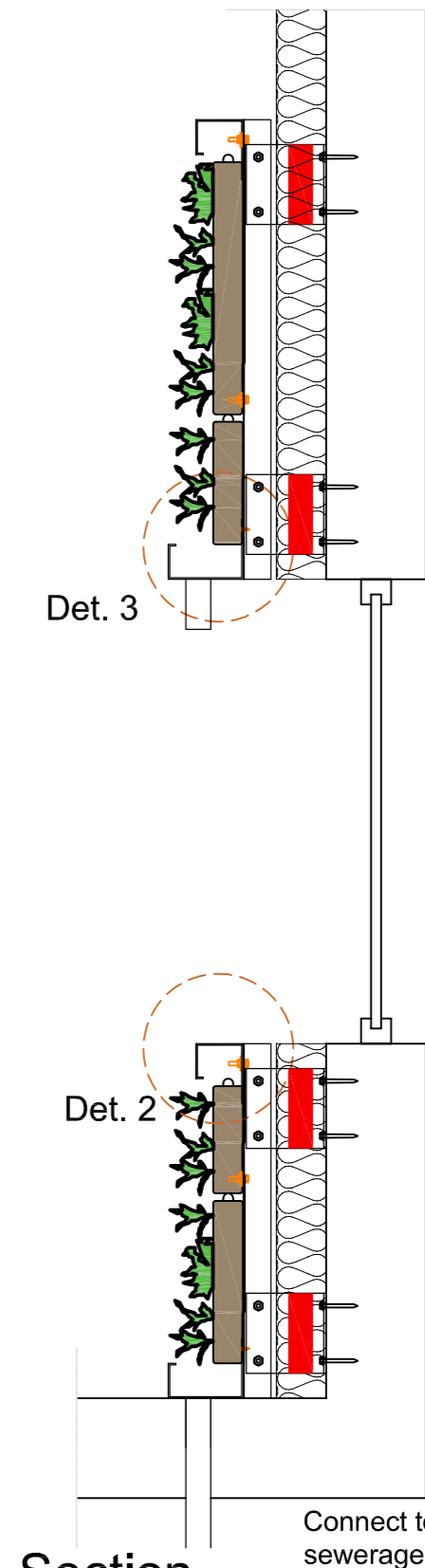
Detail 1
1:5



Detail 2
1:5



Detail 3
1:5



Section A-A

Cradle to Cradle certified



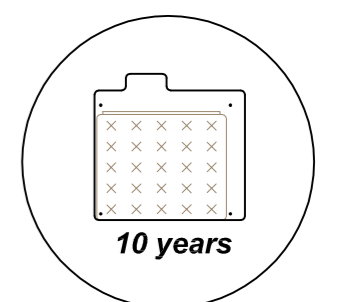
Max. saturated weight



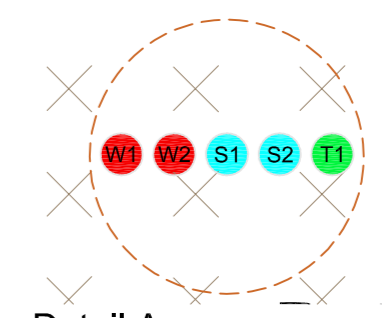
Web-based irrigation system



Warranty Flexipanel



- water pipe 3/4" female OD Ø20-40mm Pex/Al/Pex
- sensor cable moisture sensor type CY 2 x 0.5-1.0mm²
- sensor cable temperature sensor type CY 2 x 0.5-1.0mm²



Detail A
1:5

Description
SemperGreenwall
Outdoor window/door details

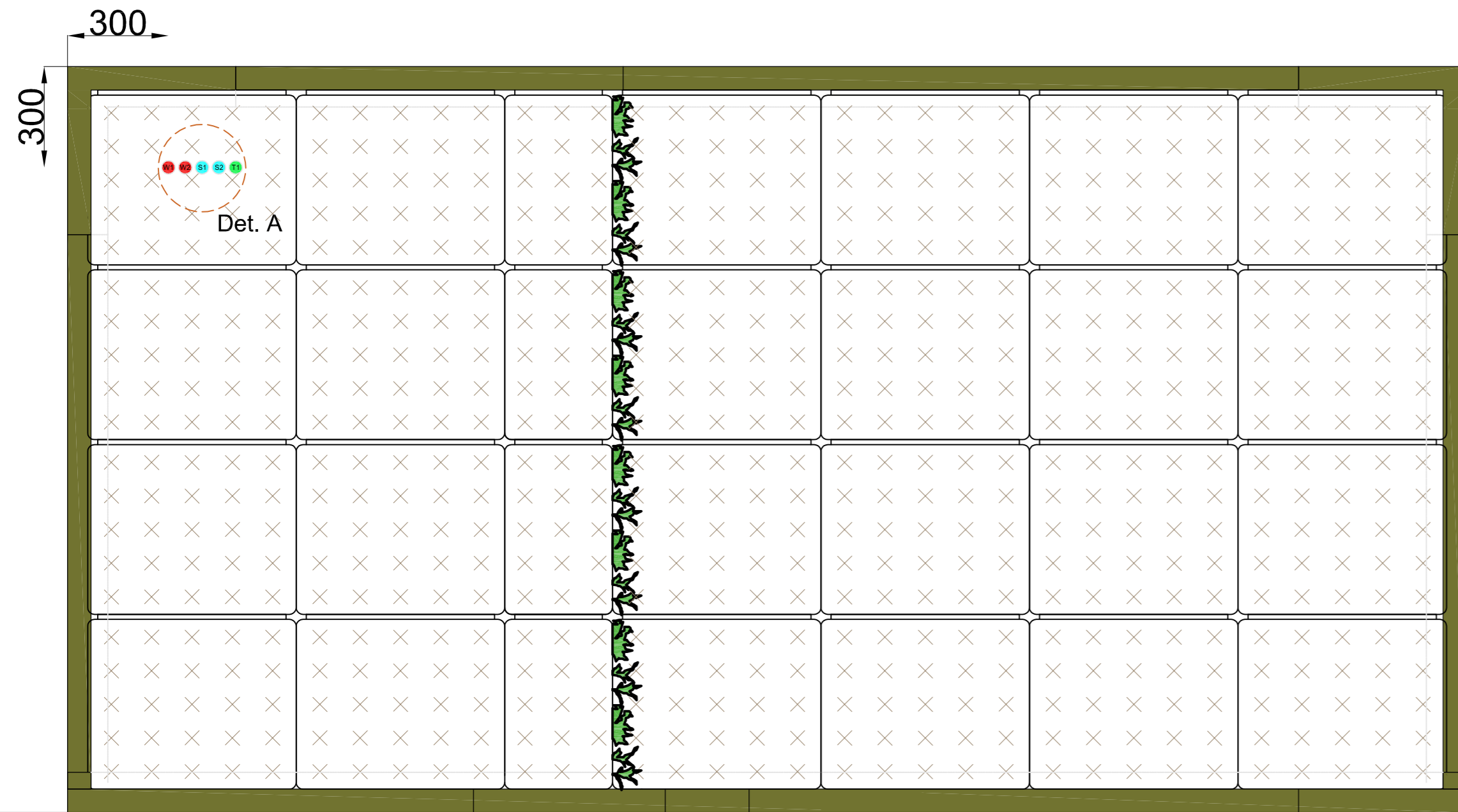
Scale
1:20 / 1:5

Size
A3

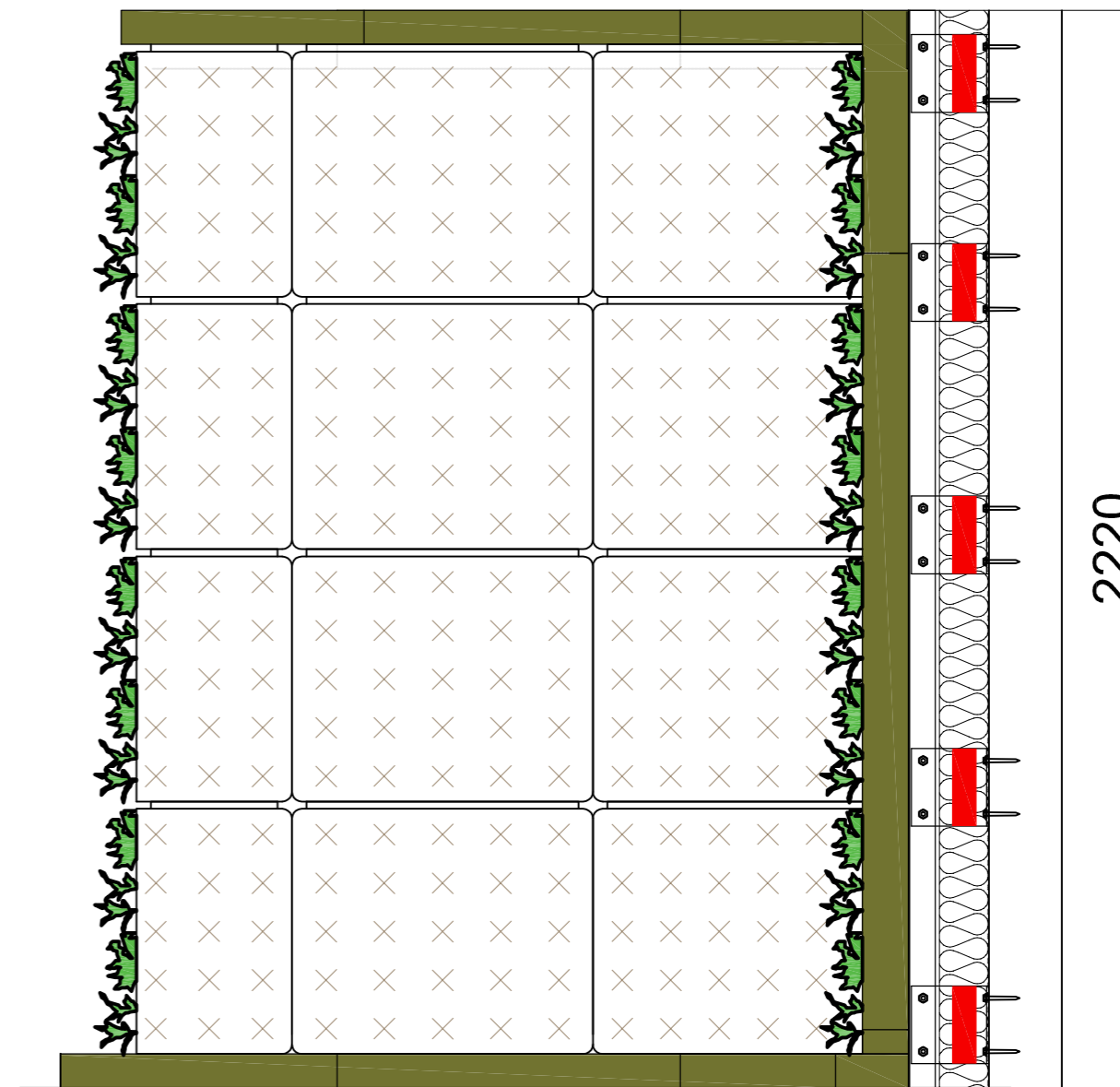
Date
15/05/2023

Drawing no.
SGWO-SI2





View A



View B

Cradle to Cradle certified



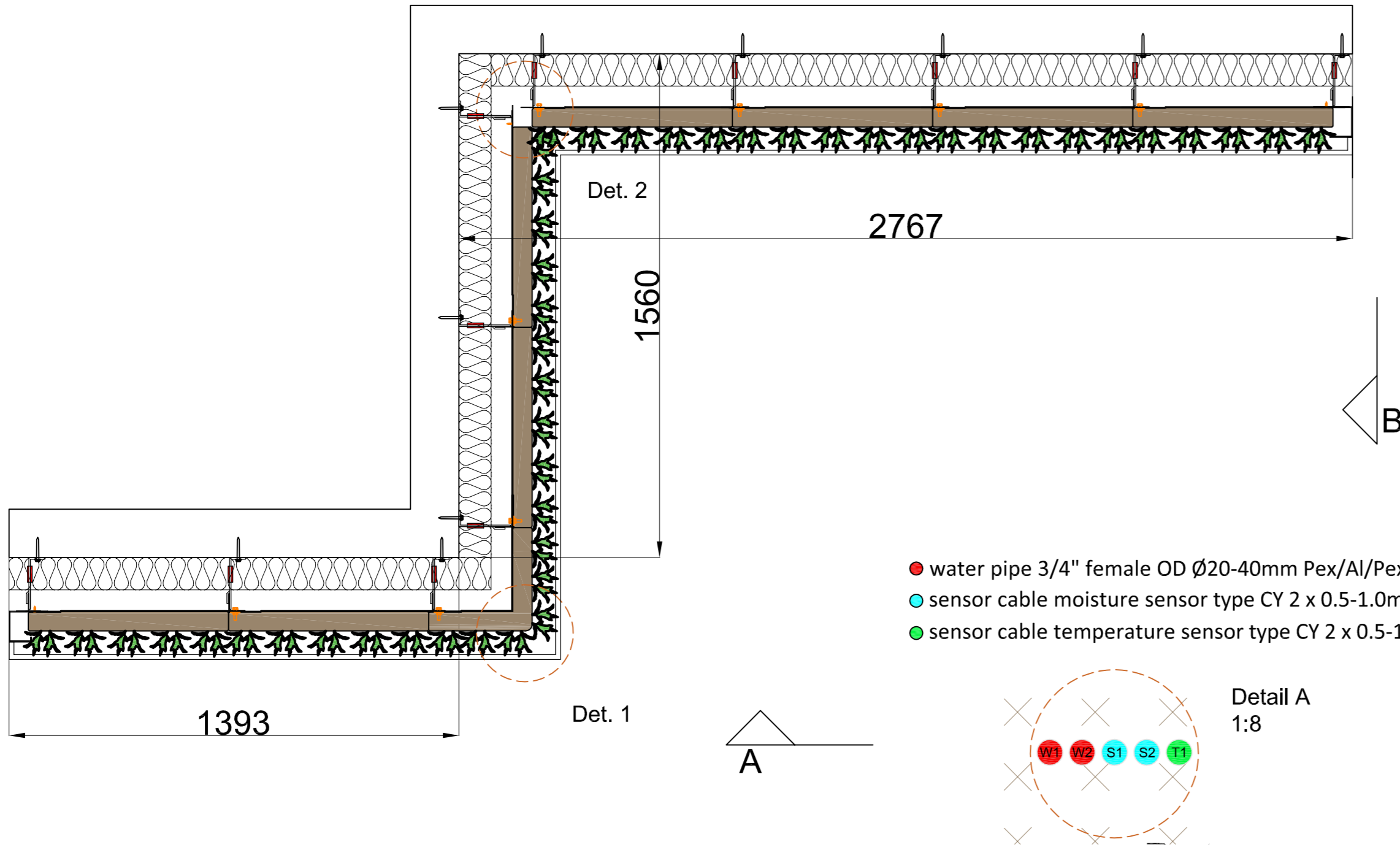
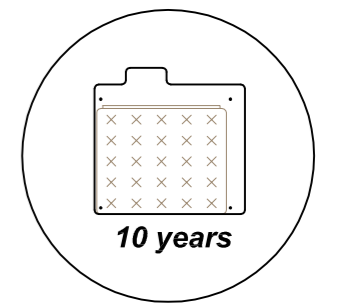
Max. saturated weight



Web-based irrigation system

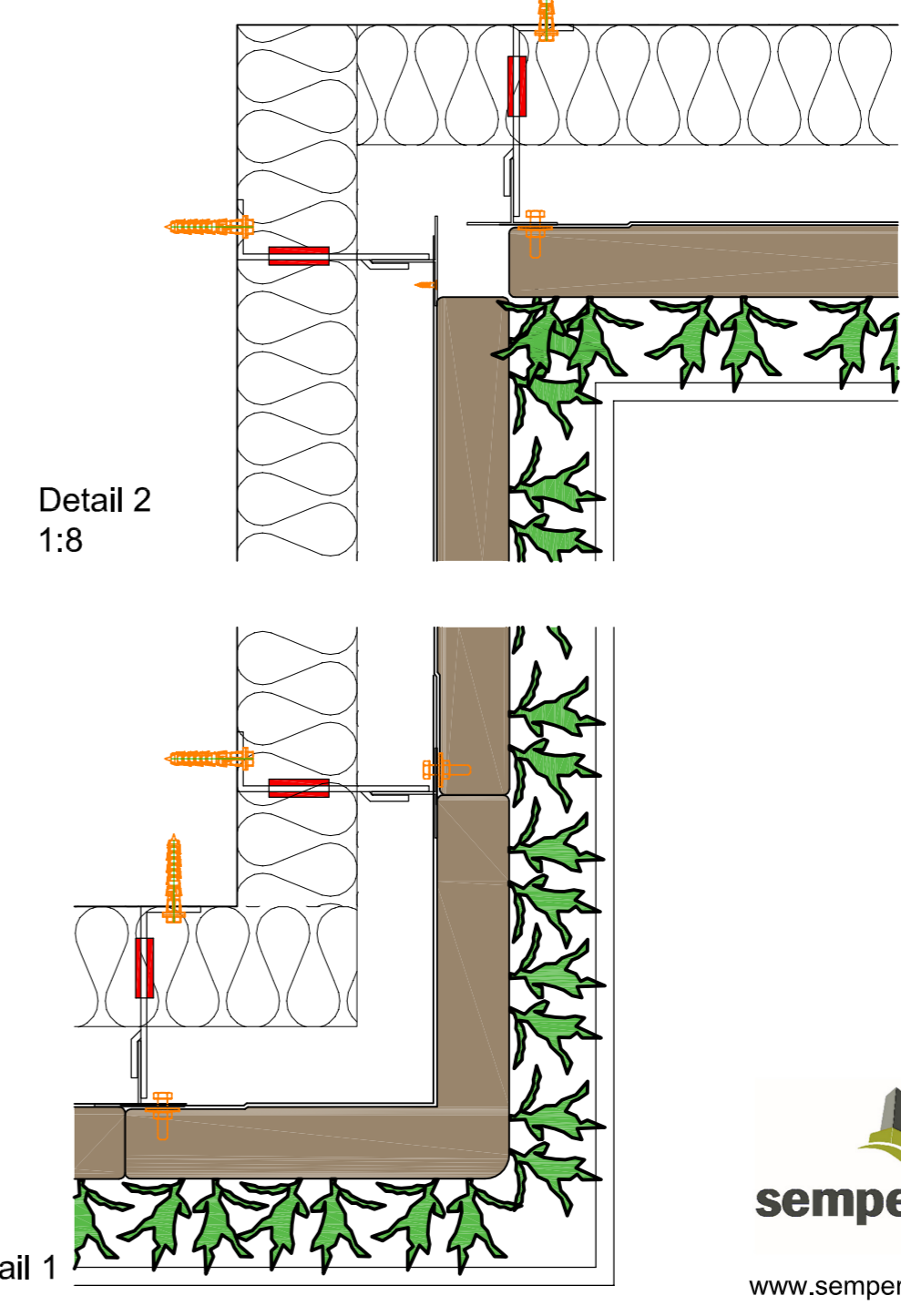


Warranty Flexipanel



- water pipe 3/4" female OD Ø20-40mm Pex/Al/Pex
- sensor cable moisture sensor type CY 2 x 0.5-1.0mm²
- sensor cable temperature sensor type CY 2 x 0.5-1.0mm²

Detail A
1:8

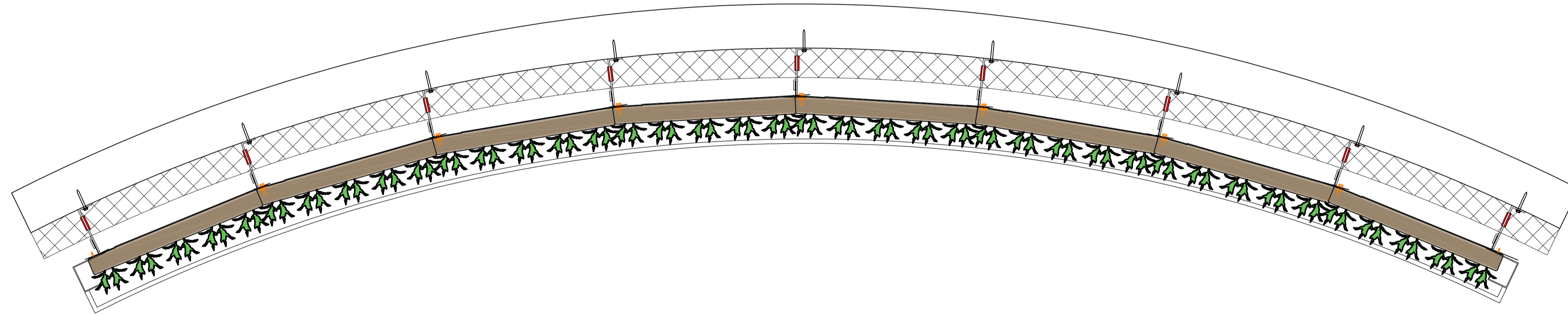
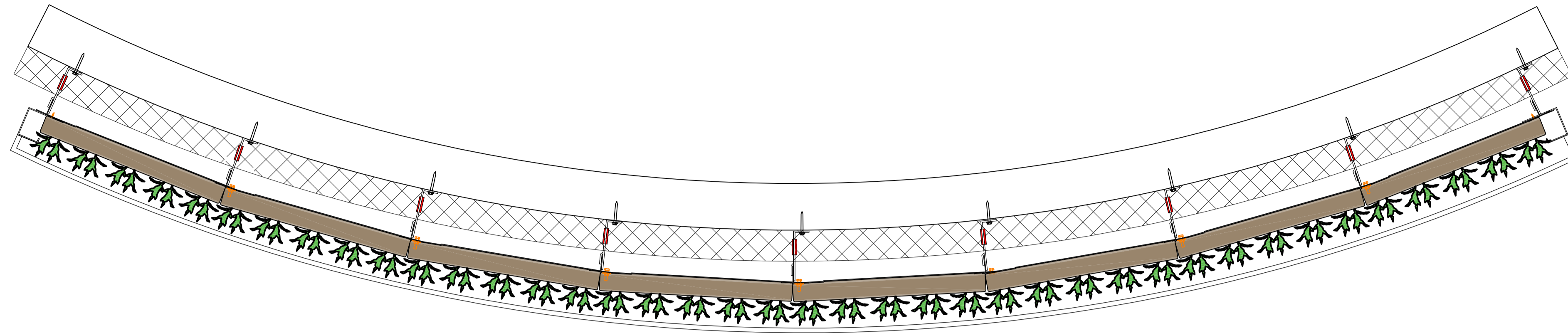


Detail 2
1:8

Detail 1
1:8



Description	SemperGreenwall Outdoor corner details
Scale	1:20 / 1:8
Size	A3
Date	15/05/2023
Drawing no.	SGWO-SI3



Cradle to Cradle certified



Max. saturated weight



Web-based irrigation system



Warranty Flexipanel

