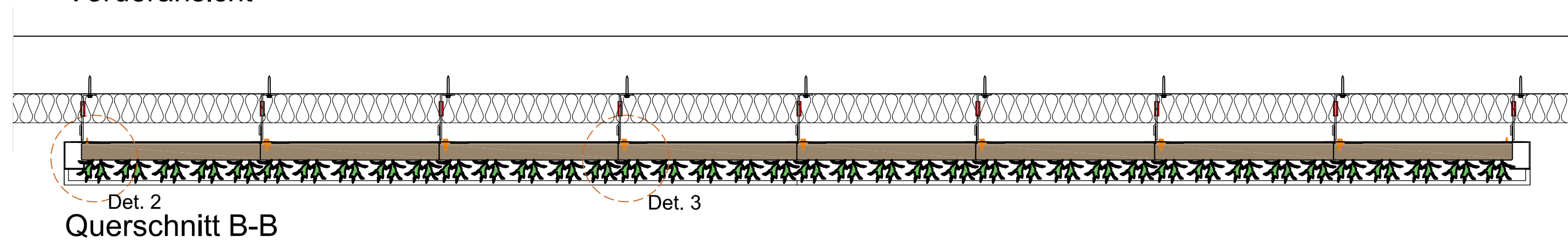
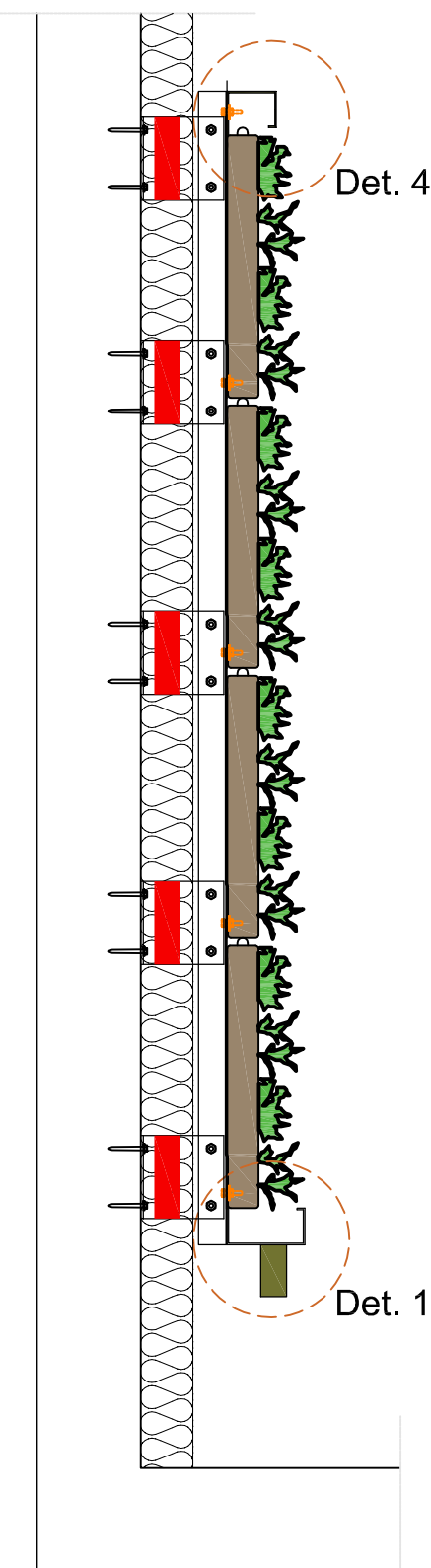


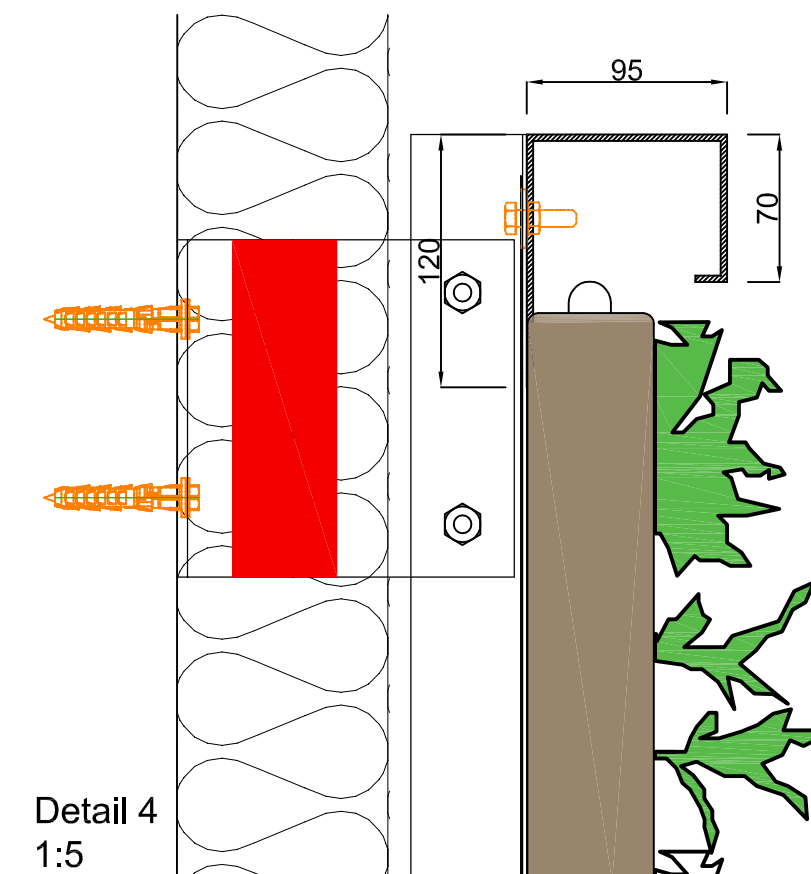
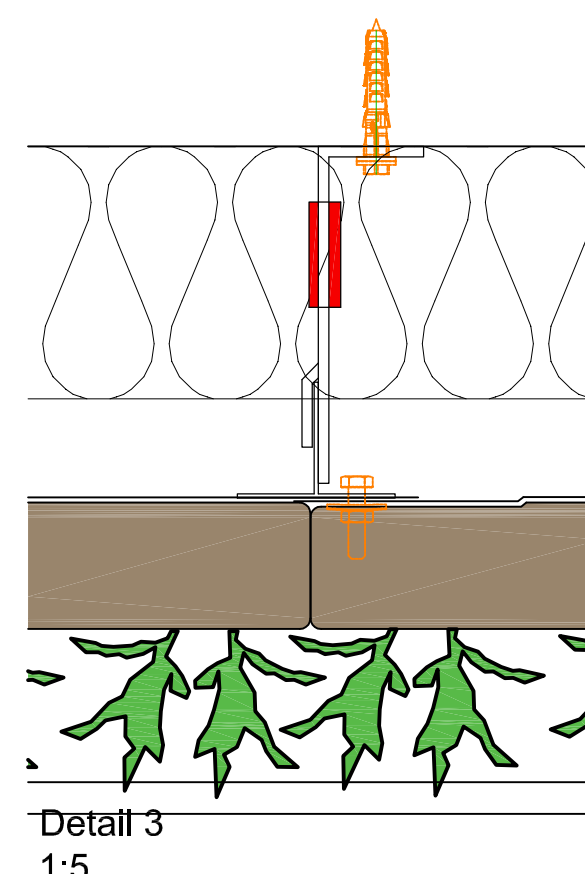
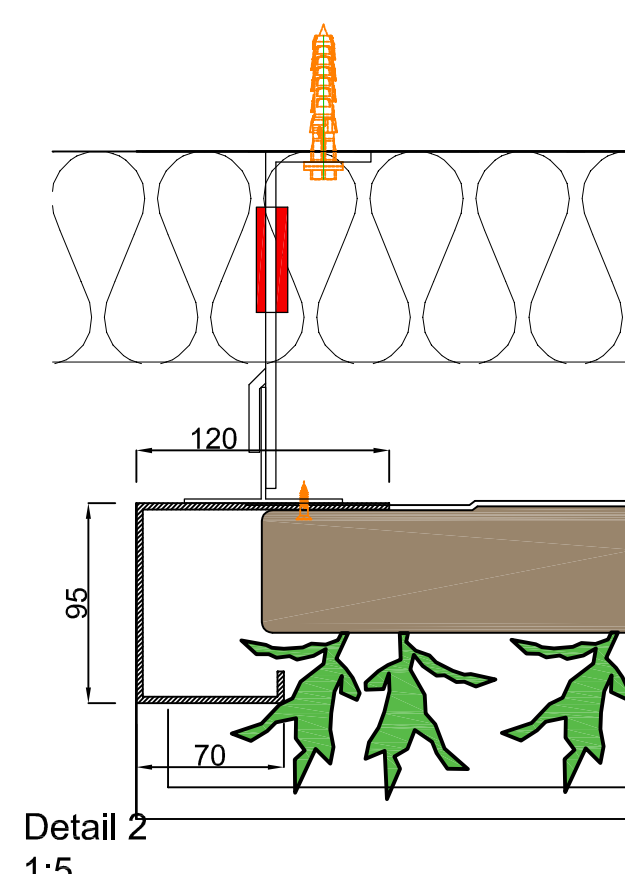
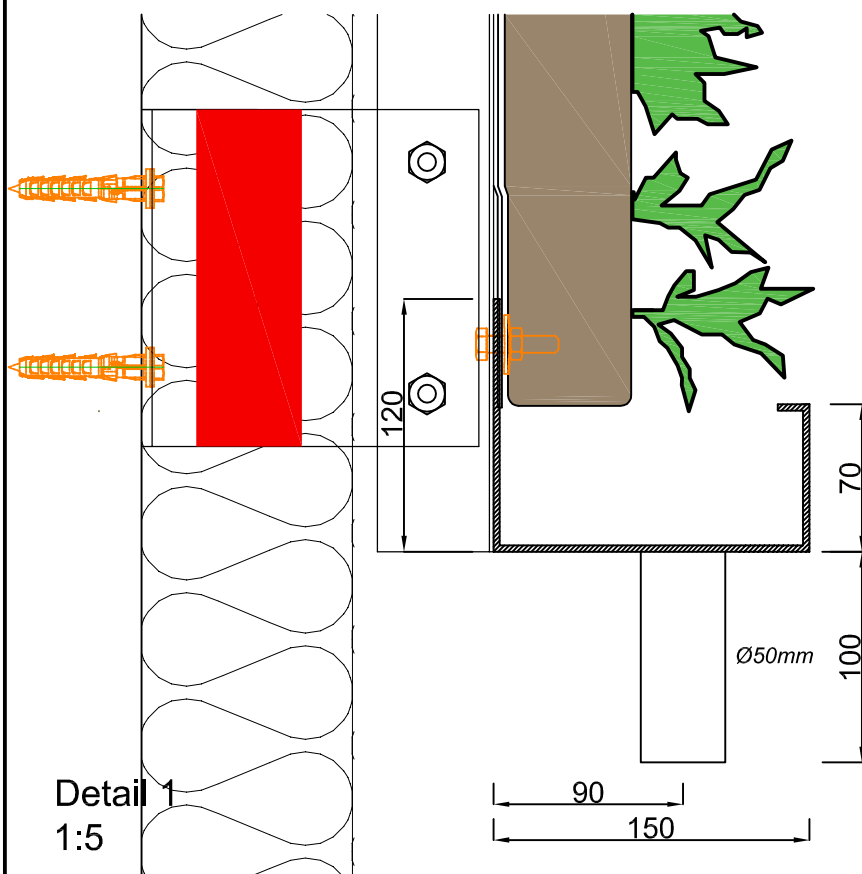
Vorderansicht



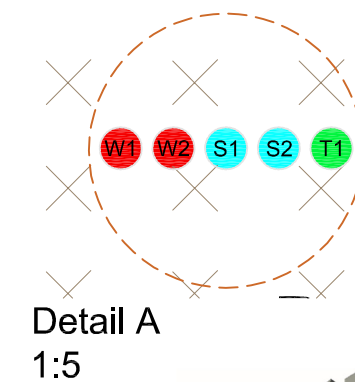
Querschnitt B-B



Querschnitt A-A



- Wasserleitung 3/4" Innengewinde DN15-32 Pex/Al/Pex
- sensor kabel Feuchtesensor Typ CY 2 x 0,5-1,0mm²
- sensor kabel Temperatursensor Typ CY 2 x 0,5-1,0mm²

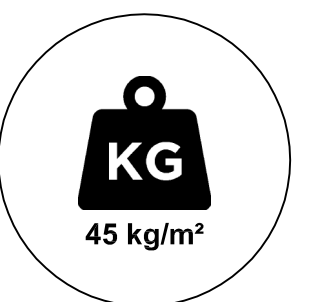


sempergreen wall
www.sempergreenwall.com

Cradle to Cradle
zertifiziert



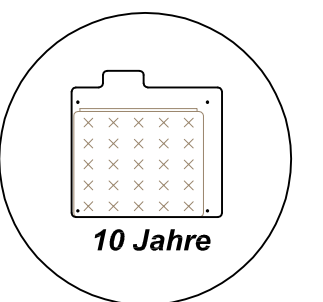
Max. gesättigtes
Gewicht



Webbasiertes
Bewässerungssystem



Garantie Flexipanel



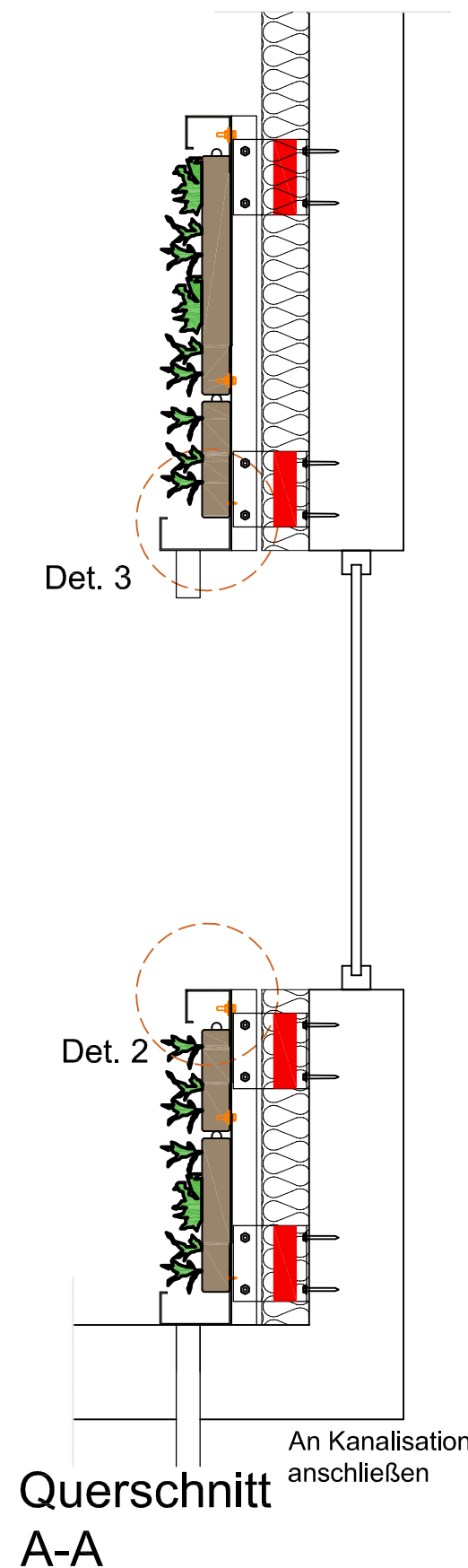
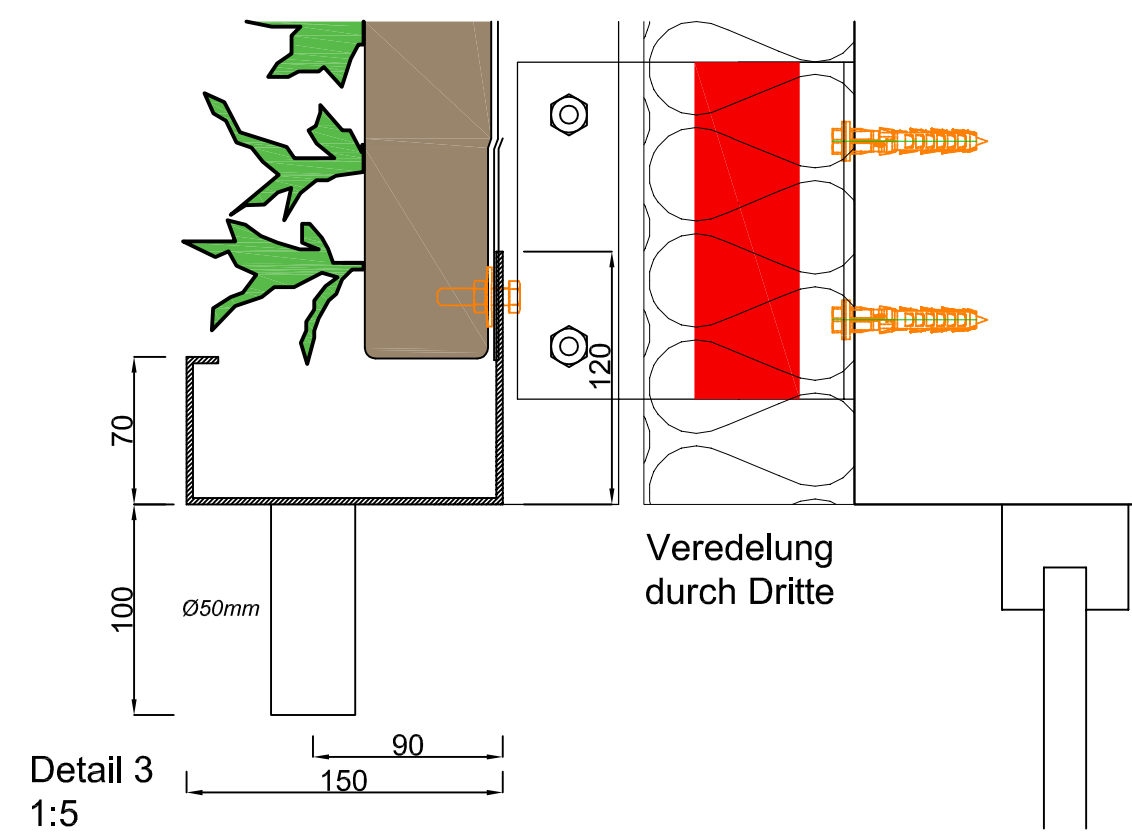
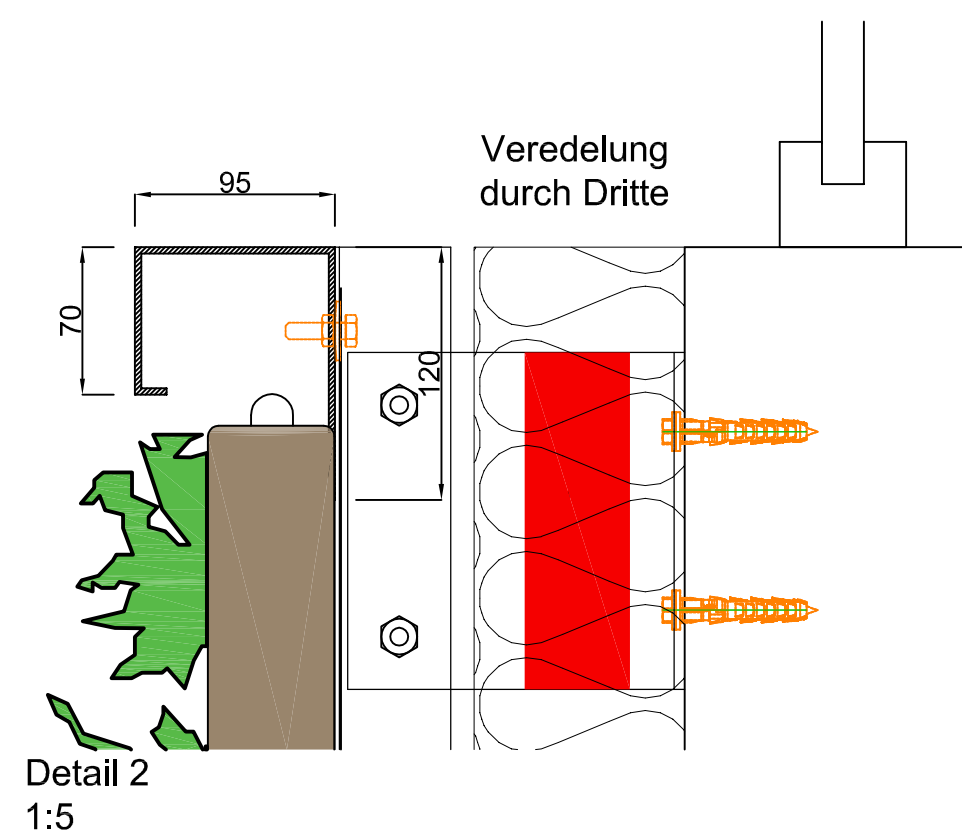
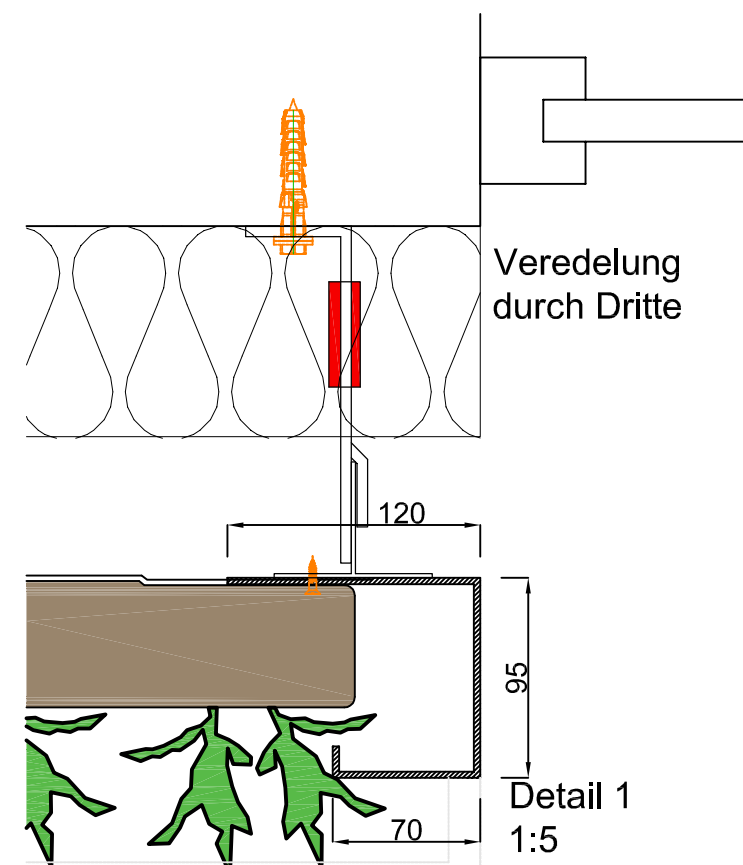
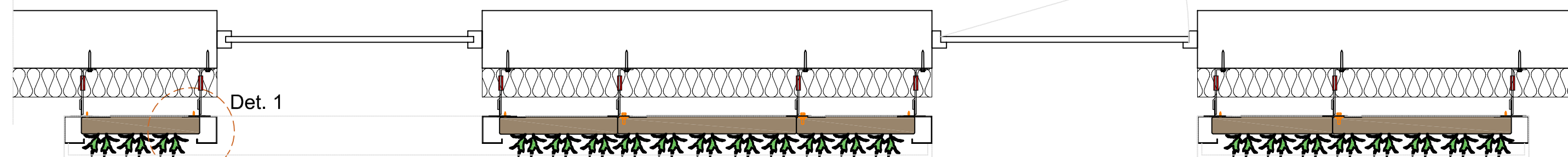
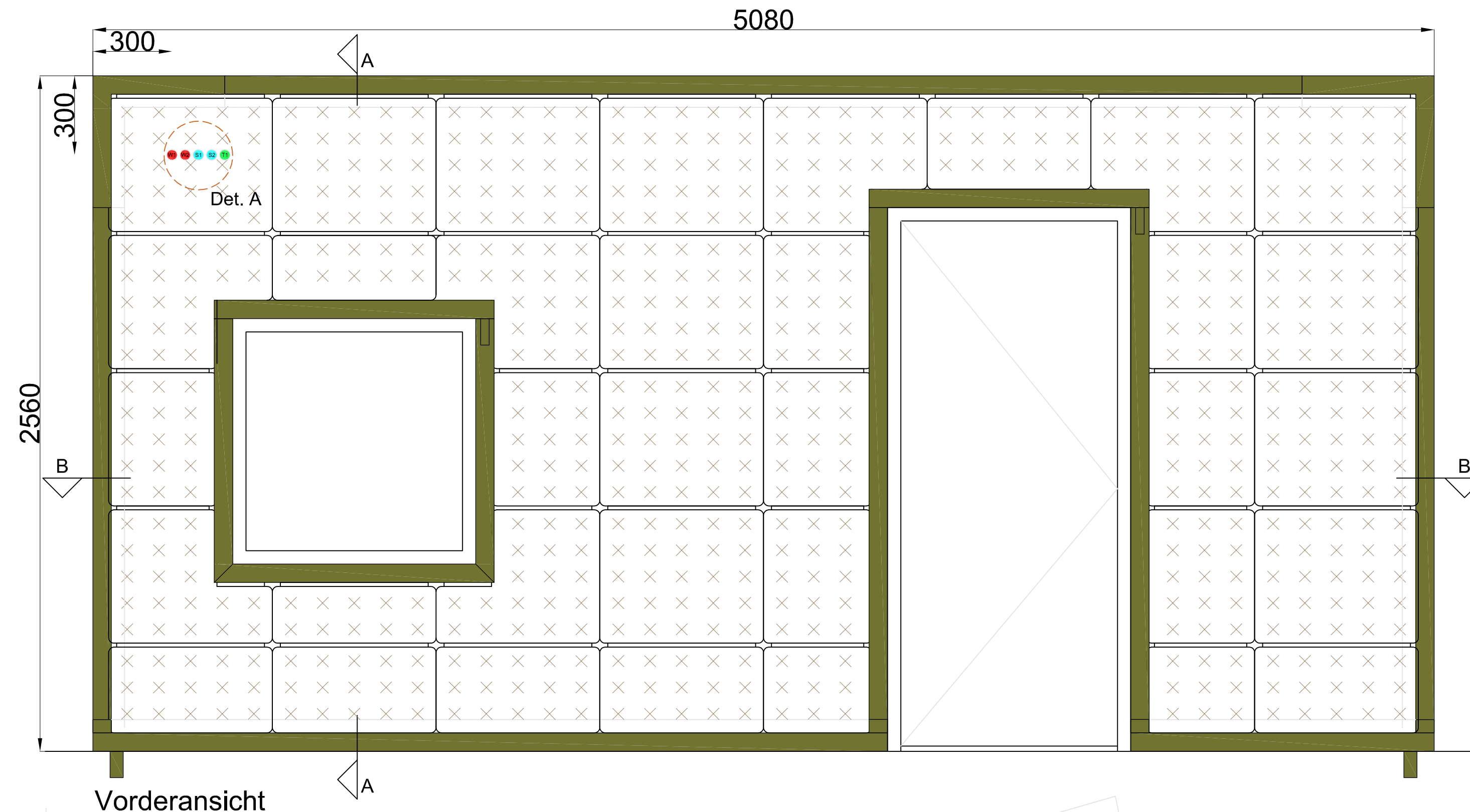
Beschreibung
SemperGreenwall
Outdoor

Maßstab
1:20 / 1:5

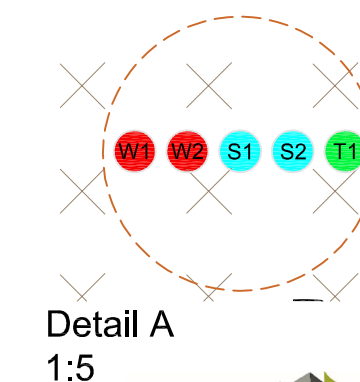
Format
A3

Datum
15.05.2023

Zeichnung Nr.
SGWO-I01



- Wasserleitung 3/4" Innengewinde DN15-32 Pex/Al/Pex
- sensor kabel Feuchtesensor Typ CY 2 x 0,5-1,0mm²
- sensor kabel Temperatursensor Typ CY 2 x 0,5-1,0mm²



Cradle to Cradle
zertifiziert



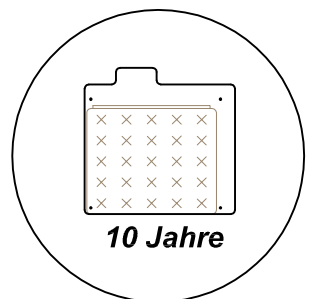
Max. gesättigtes
Gewicht



Webbasiertes
Bewässerungssystem



Garantie Flexipanel



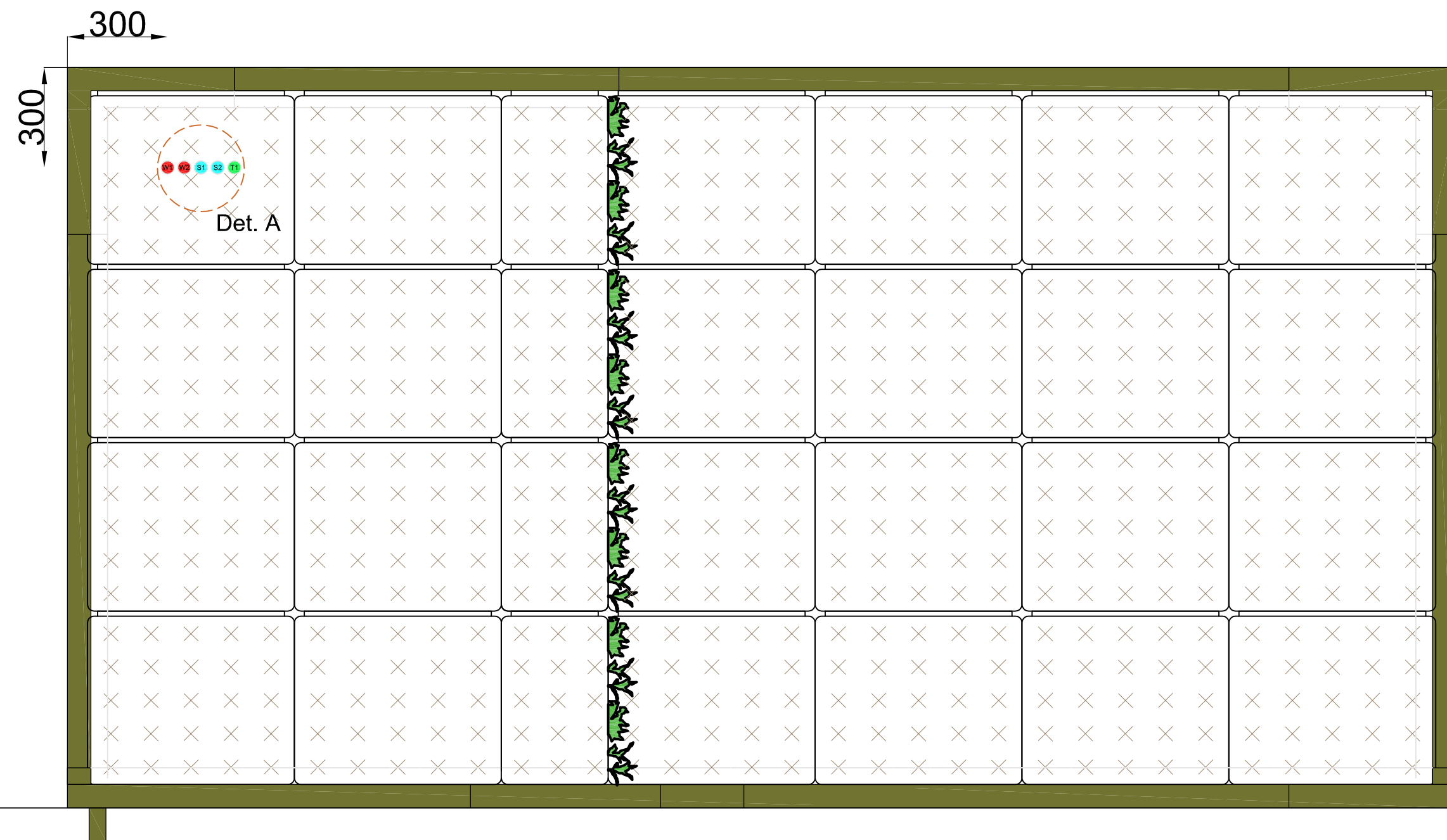
Beschreibung
SemperGreenwall
Outdoor Fenster- / Türdetails

Maßstab
1:20 / 1:5

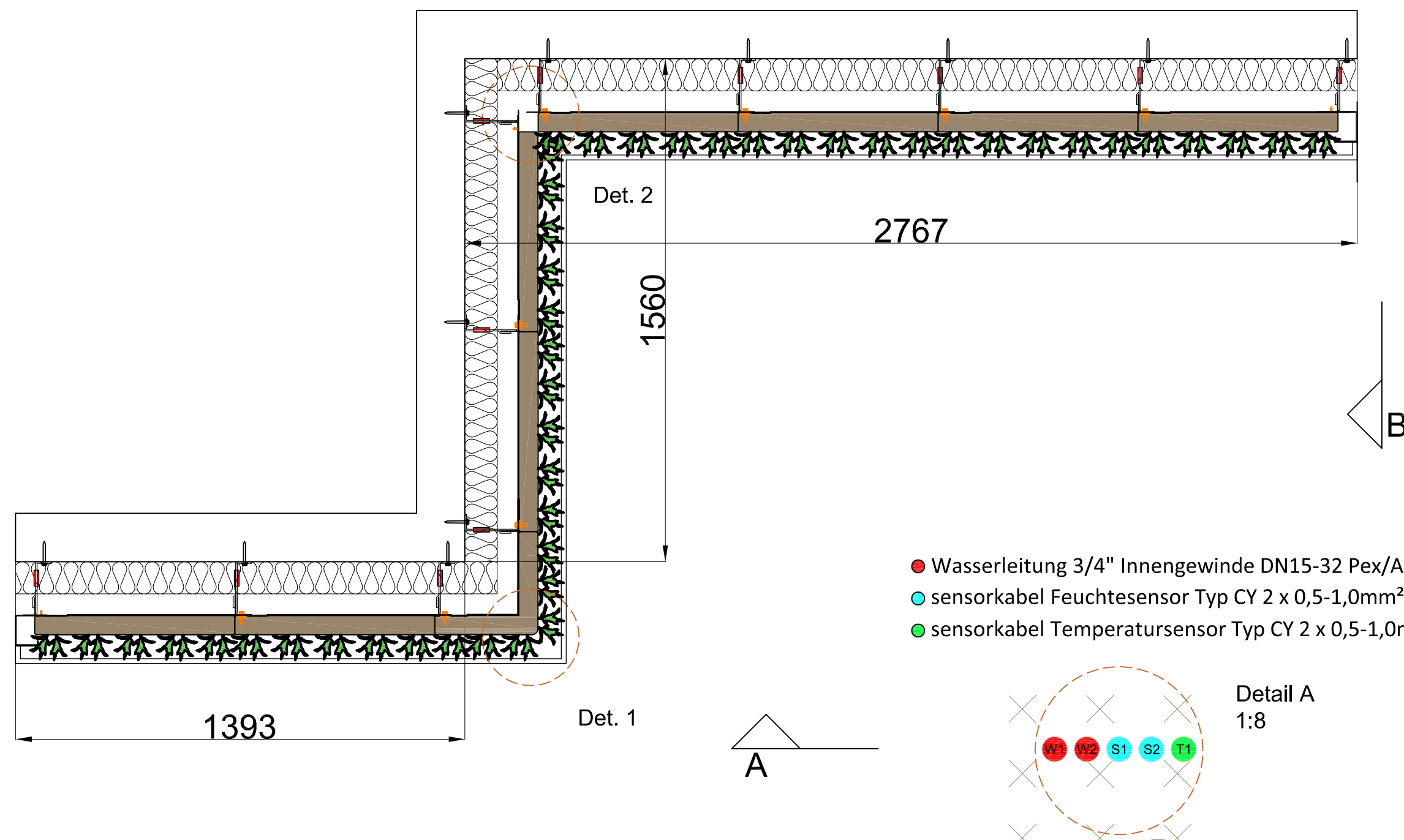
Format
A3

Datum
15.05.2023

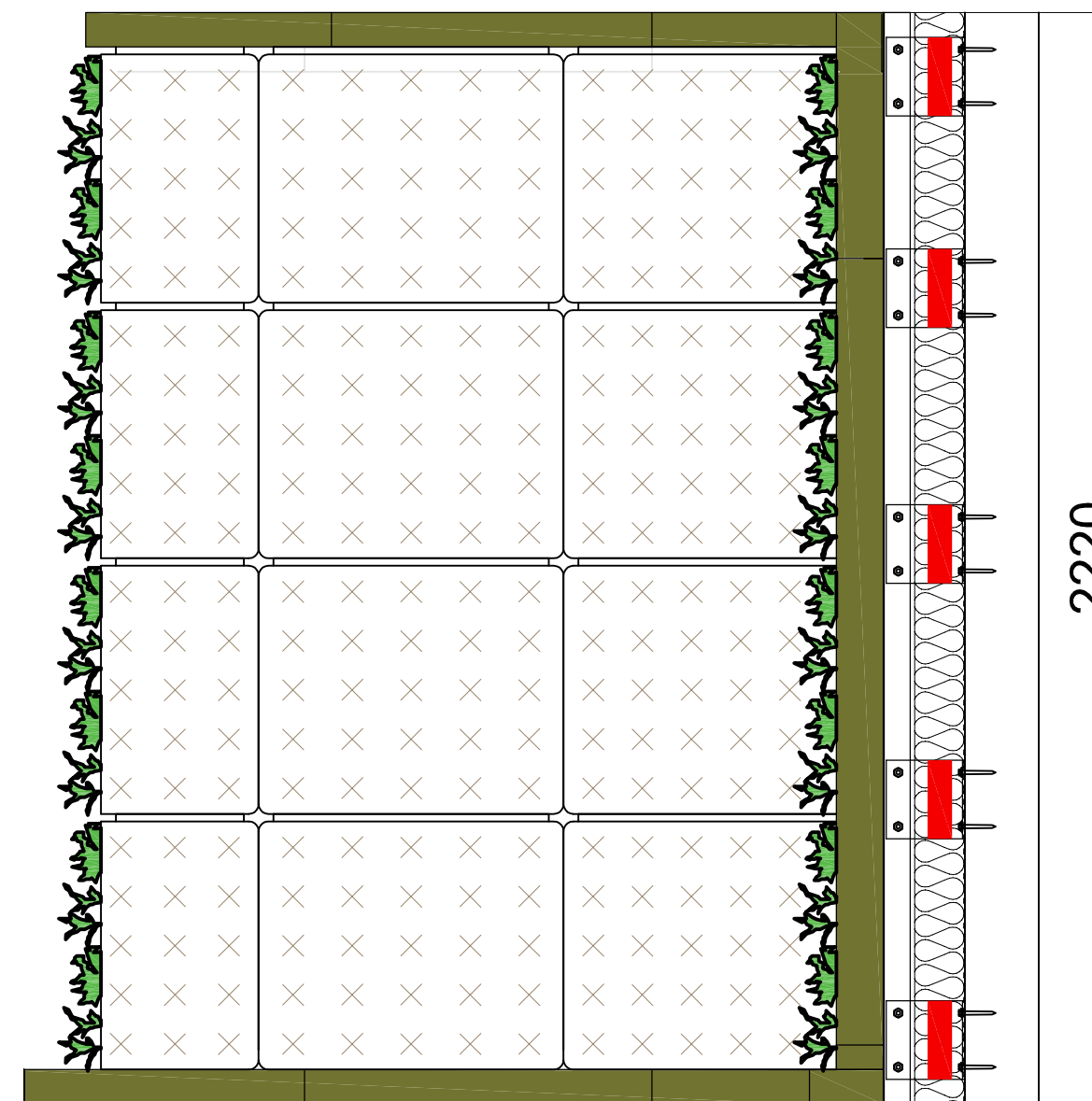
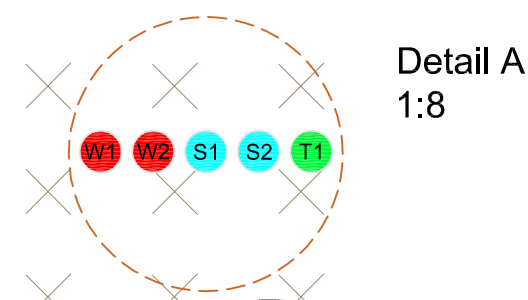
Zeichnung Nr.
SGWO-102



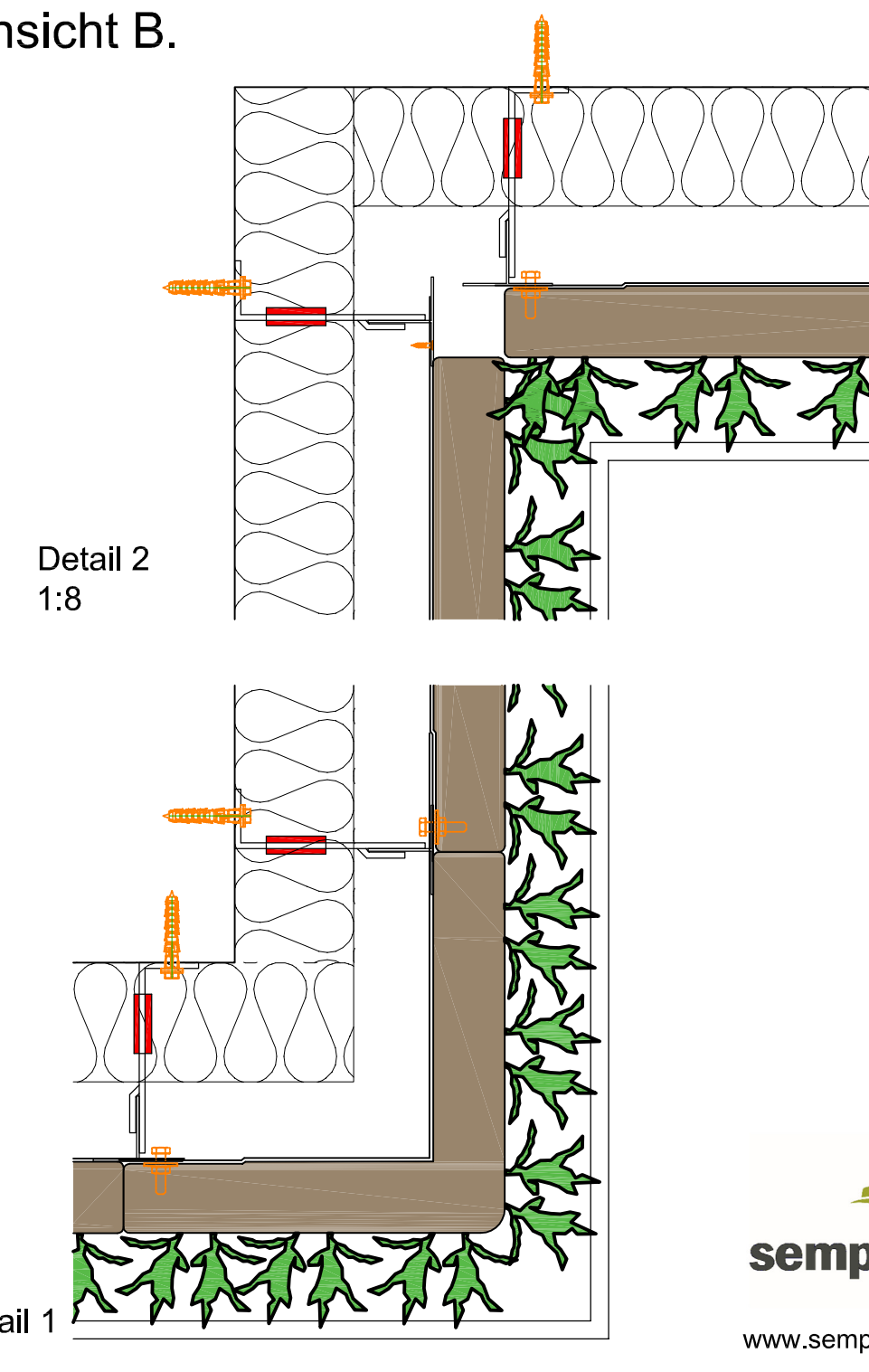
Ansicht A.



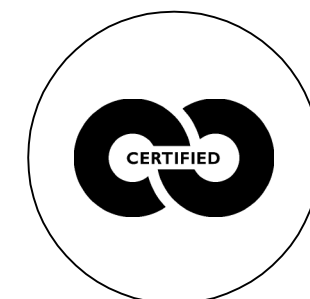
- Wasserleitung 3/4" Innengewinde DN15-32 Pex/Al/Pex
- sensorkabel Feuchtesensor Typ CY 2 x 0,5-1,0mm²
- sensorkabel Temperatursensor Typ CY 2 x 0,5-1,0mm²



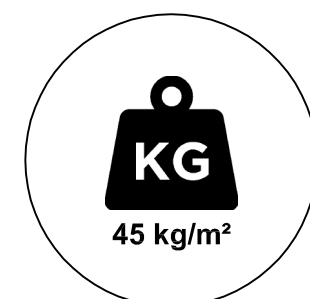
Ansicht B.



Cradle to Cradle
zertifiziert



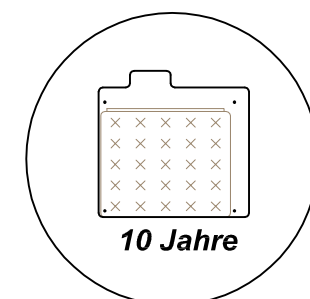
Max. gesättigtes
Gewicht



Webbasiertes
Bewässerungssystem



Garantie Flexipanel



Beschreibung
SemperGreenwall
Outdoor Eckdetails

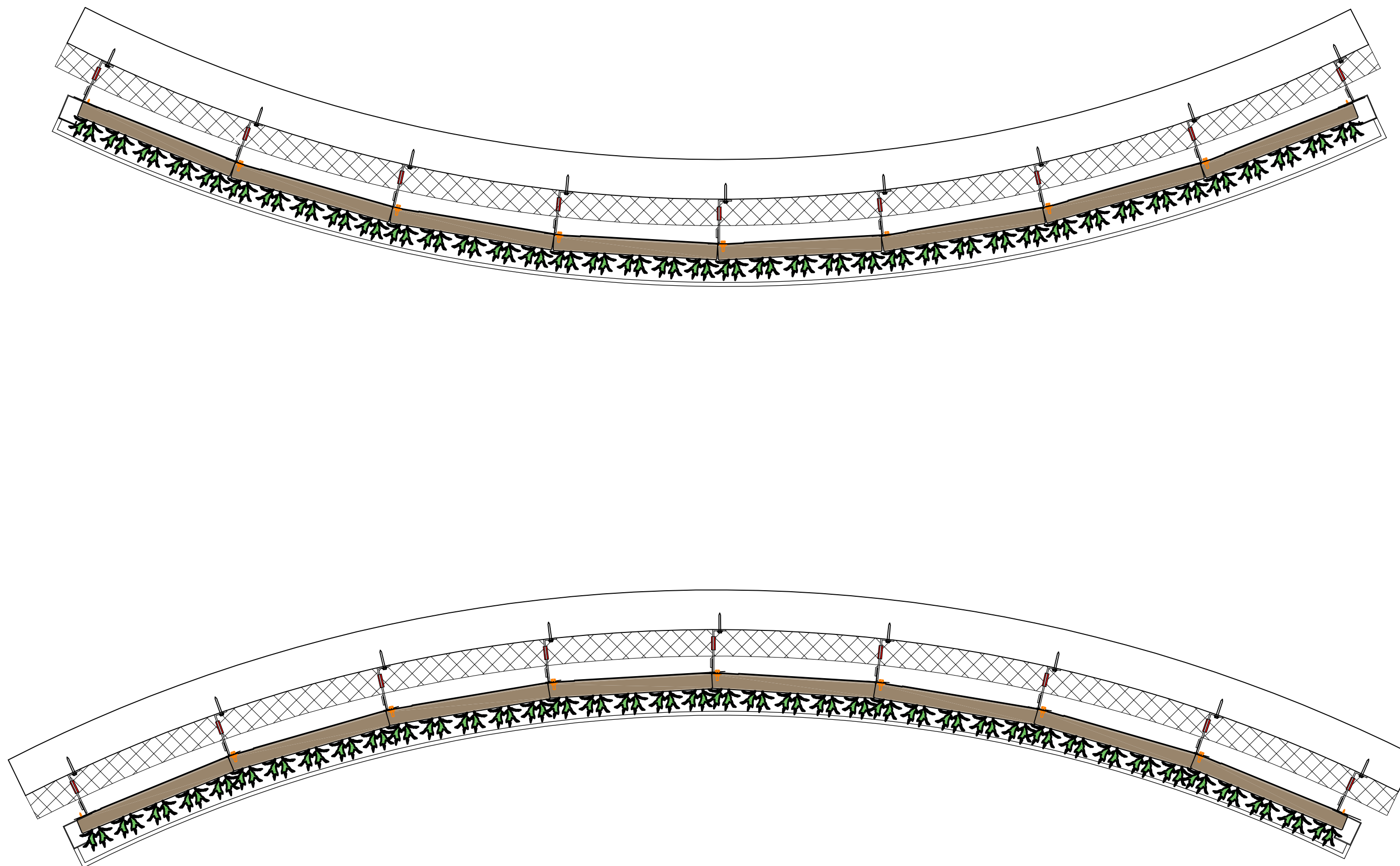
Maßstab
1:20 / 1:8

Format
A3

Datum
15.05.2023

Zeichnung Nr.
SGWO-I03





Cradle to Cradle
zertifiziert



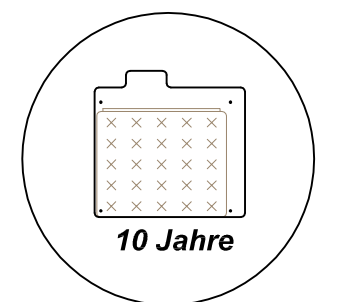
Max. gesättigtes
Gewicht



Webbasiertes
Bewässerungssystem



Garantie Flexipanel



Beschreibung
SemperGreenwall
Outdoor gebogene wand

Maßstab
1:20

Format
A3

Datum
15.05.2023

Zeichnung Nr.
SGWO-I04