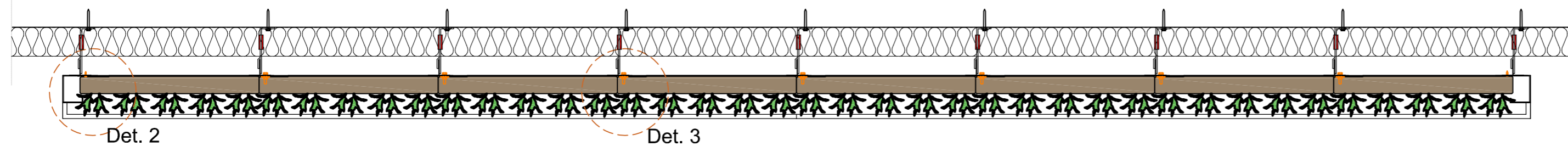
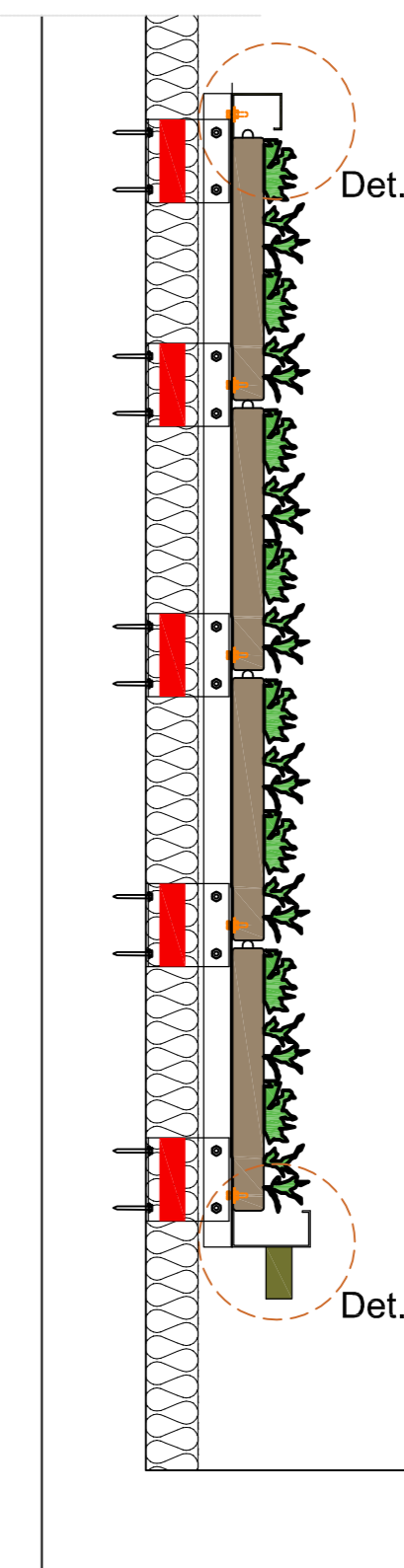


Vooraanzicht

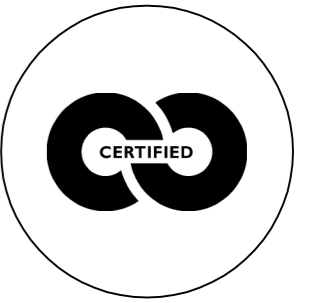


Doorsnede B-B



Doorsnede A-A

Cradle to Cradle gecertificeerd



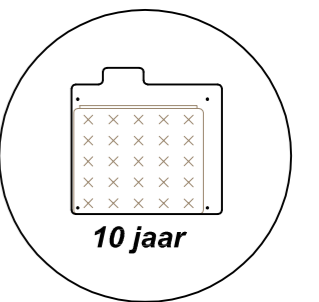
Max. verzadigd gewicht



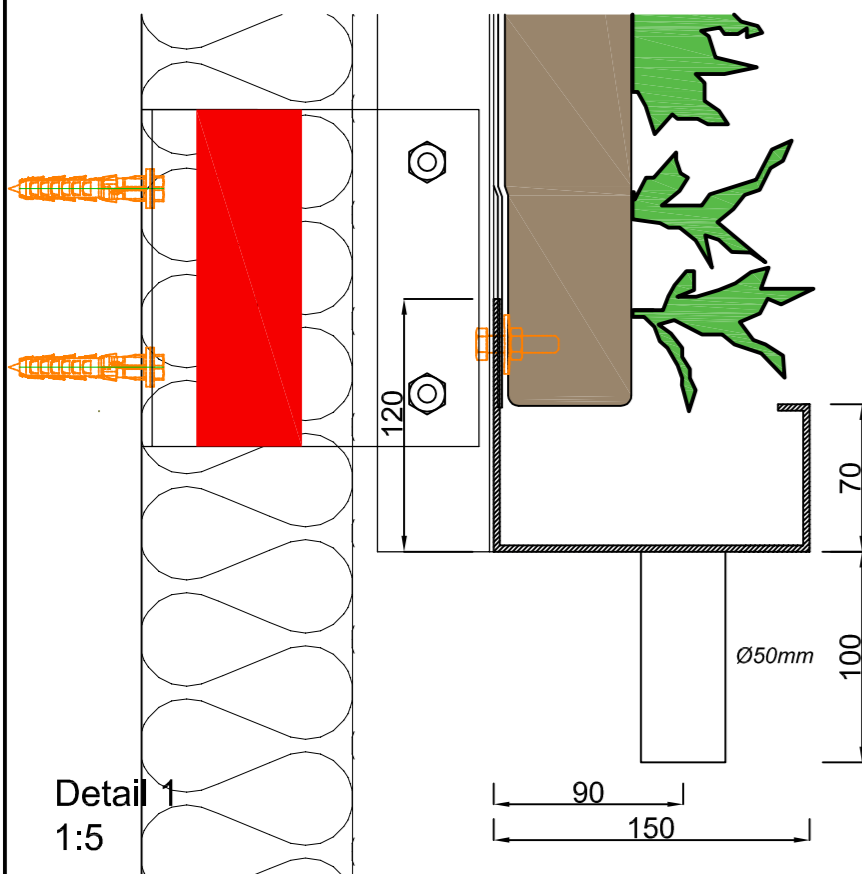
Web-based irrigatiesysteem



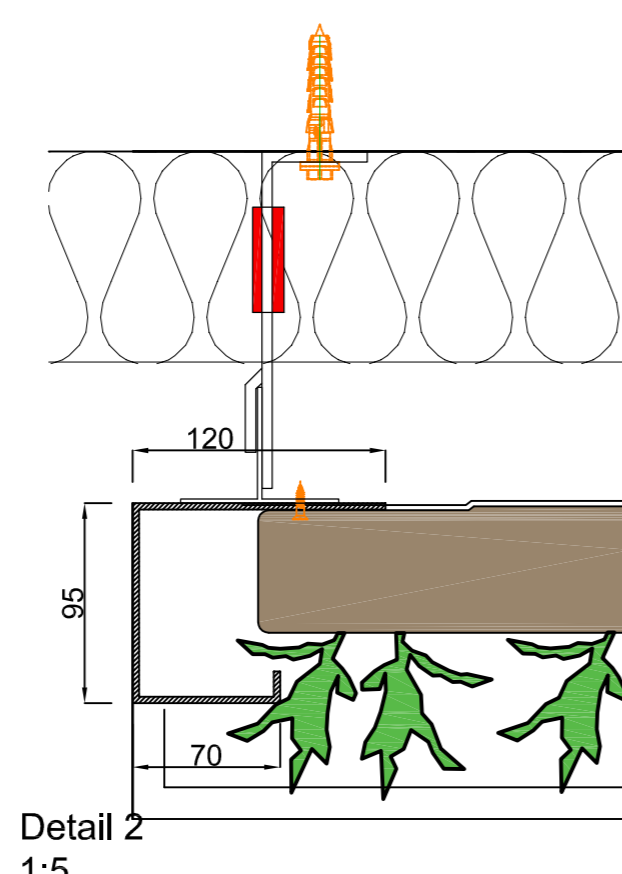
Garantie Flexipanel



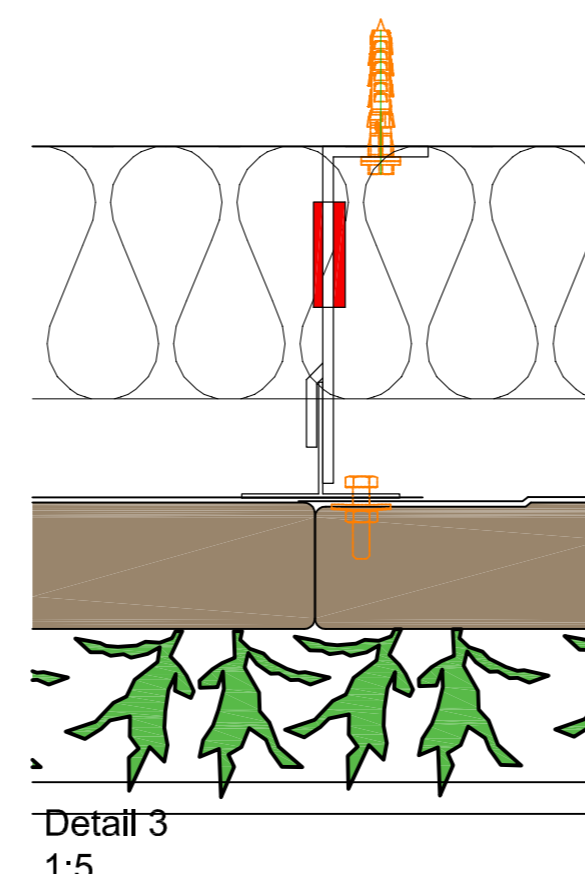
- waterleiding 3/4" bin. Ø20-40mm Pex/Al/Pex
- sensor kabel vochtsensor type CY 2 x 0.5-1.0mm<sup>2</sup>
- sensor kabel temperatuursensor type CY 2 x 0.5-1.0mm<sup>2</sup>



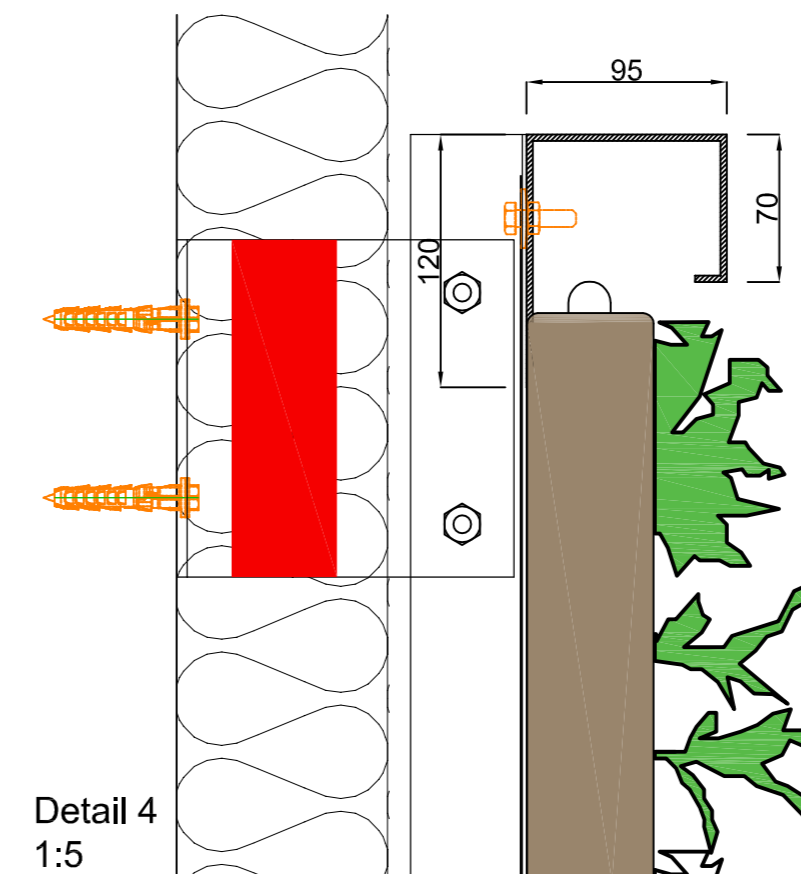
Detail 1: 1:5



Detail 2: 1:5



Detail 3: 1:5



Detail 4: 1:5



Detail A: 1:5

**Omschrijving**  
SemperGreenwall Outdoor

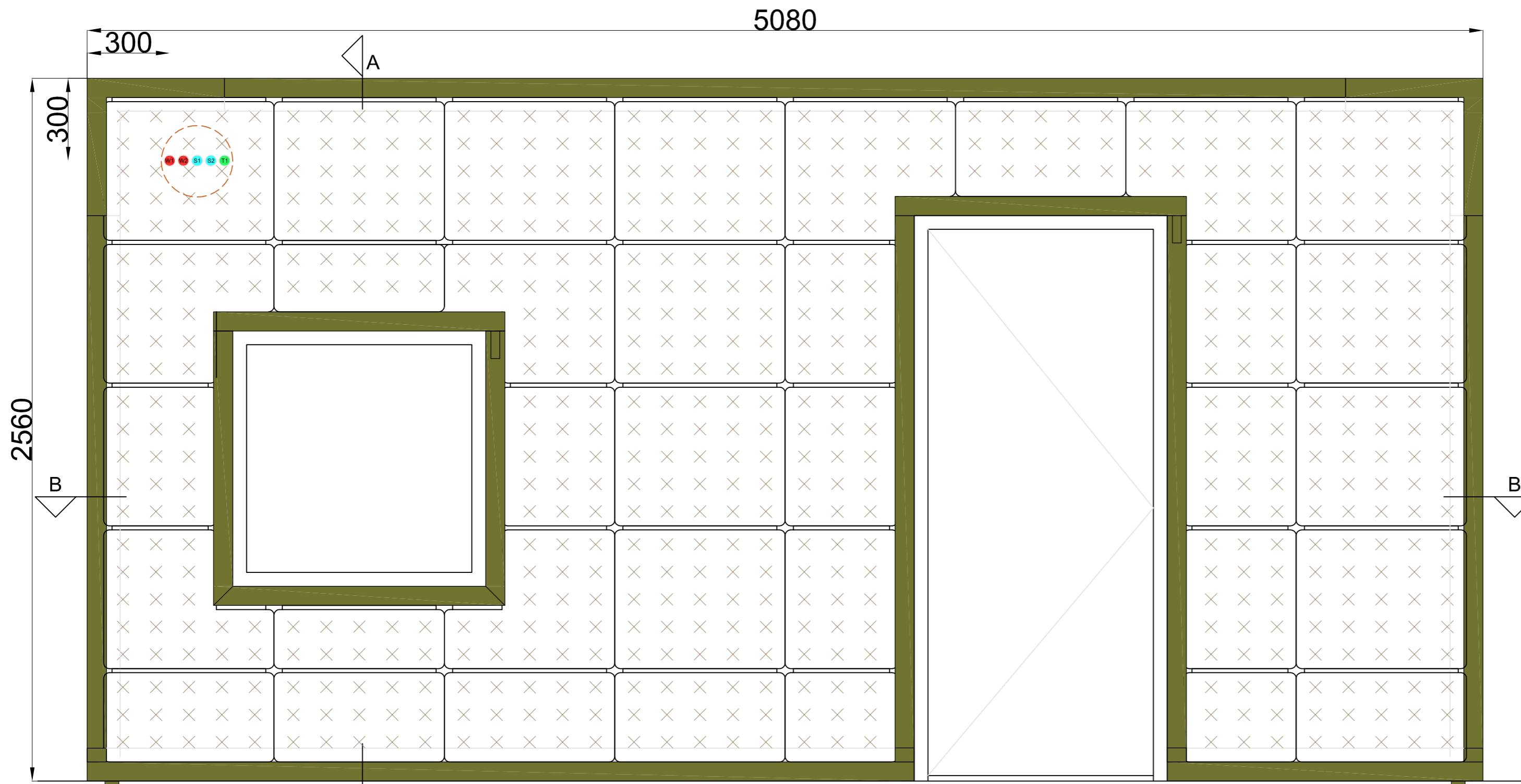
**Schaal**  
1:20 / 1:5

**Formaat**  
A3

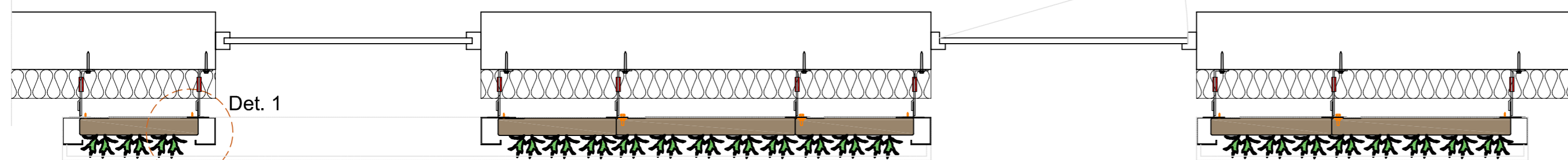
**Datum**  
15-05-2023

**Tekening nr.**  
SGWO-101

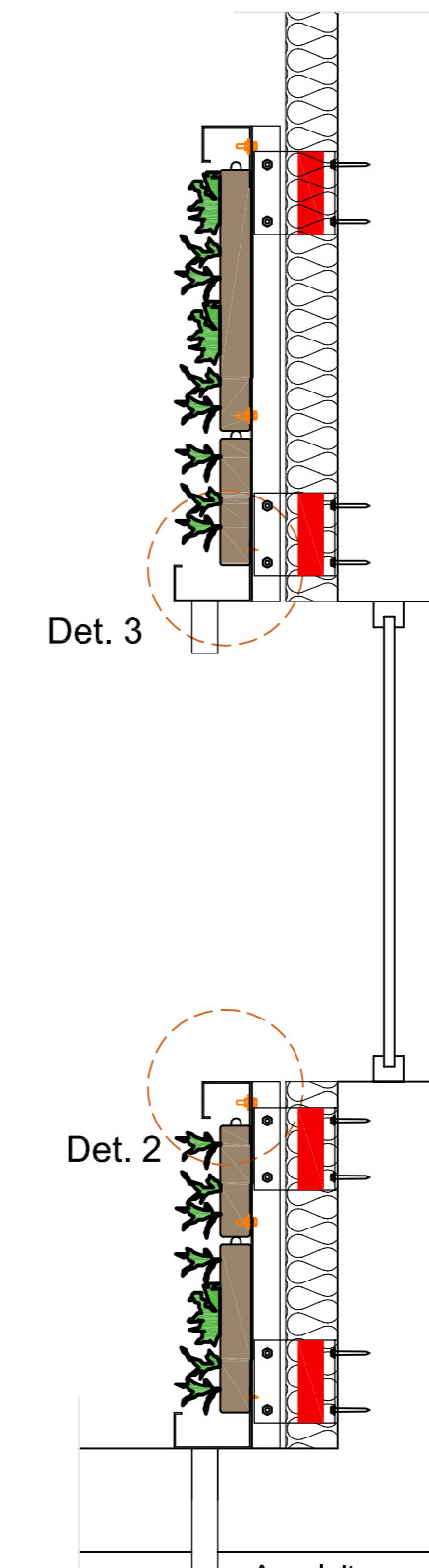
**sempergreen wall**  
www.sempergreenwall.com



Voorbeeld



Doorsnede B-B



Doorsnede A-A

- waterleiding 3/4" bin. Ø20-40mm Pex/Al/Pex
- sensor kabel vochtsensor type CY 2 x 0.5-1.0mm<sup>2</sup>
- sensor kabel temperatuursensor type CY 2 x 0.5-1.0mm<sup>2</sup>

Cradle to Cradle gecertificeerd



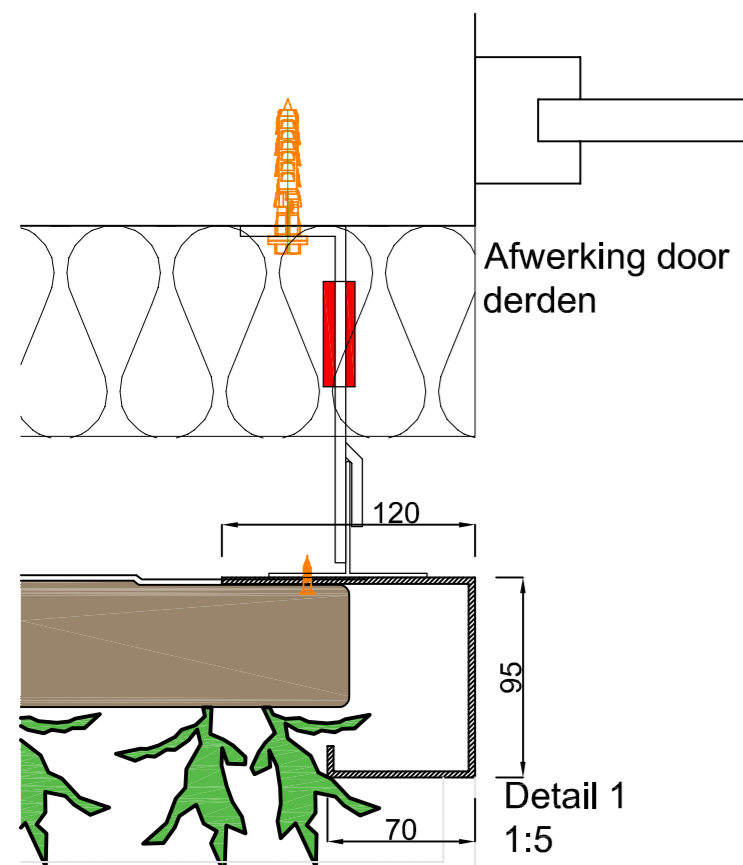
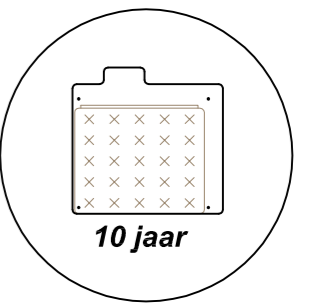
Max. verzadigd gewicht



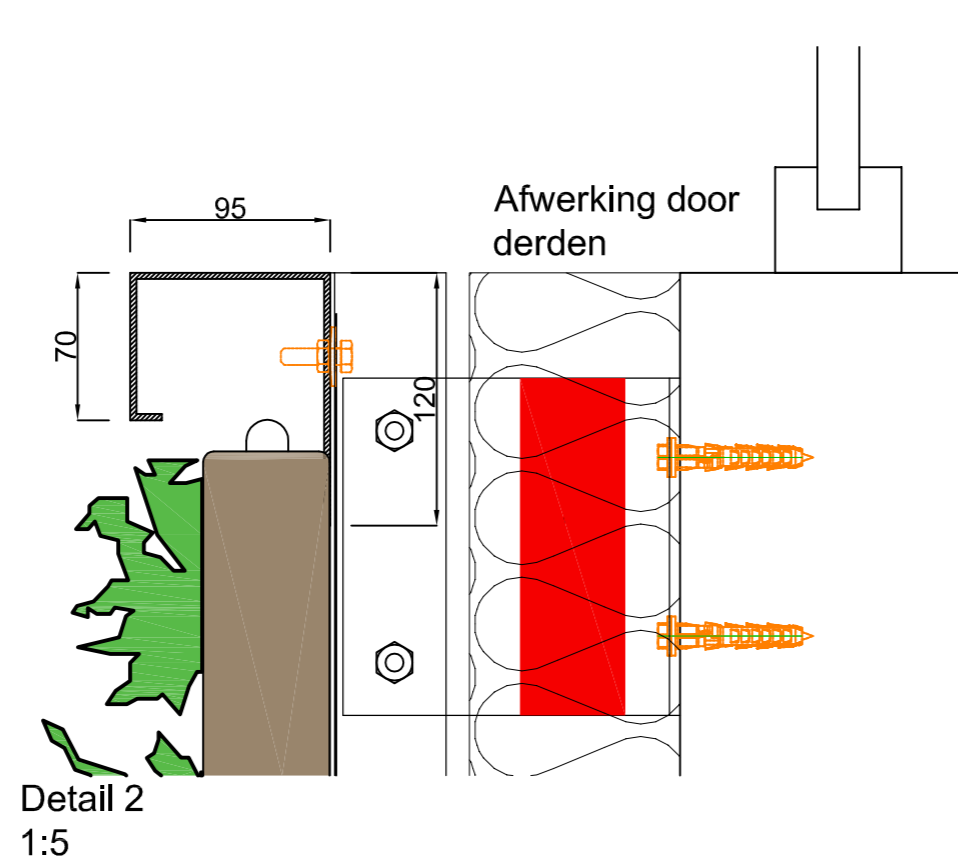
Web-based irrigatiesysteem



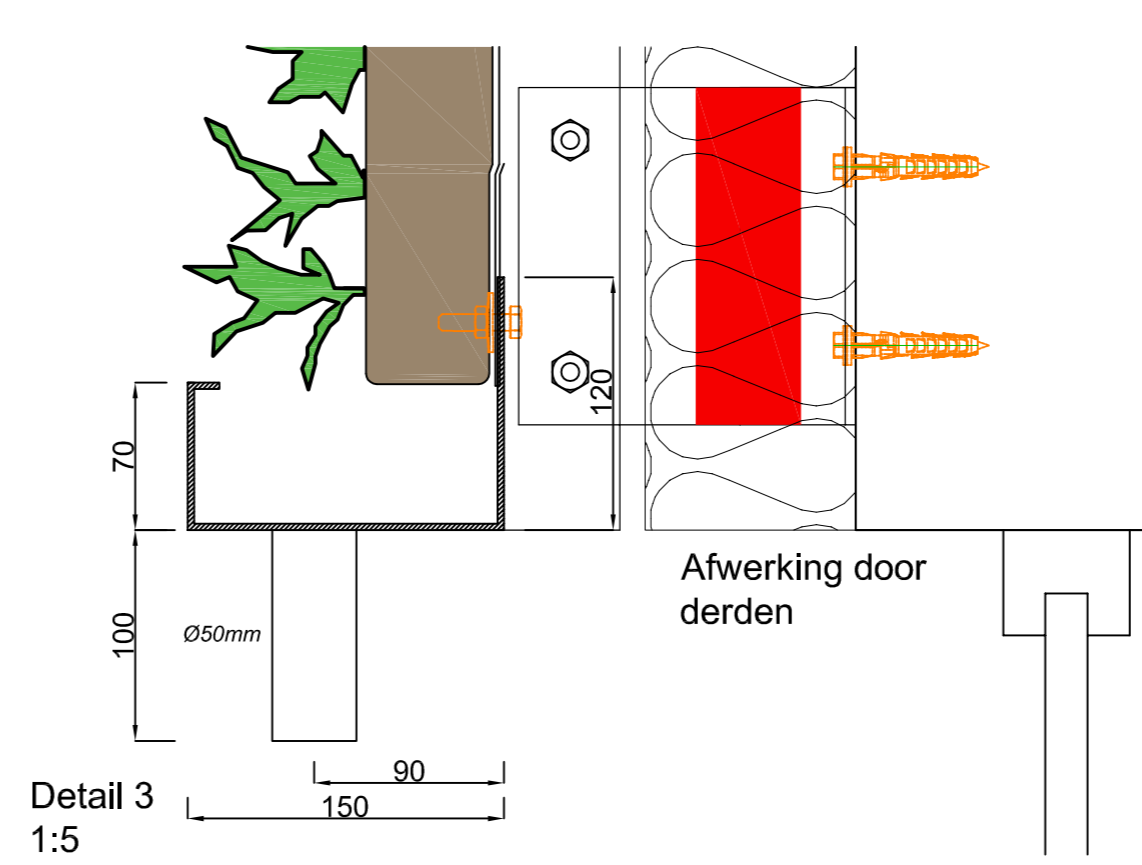
Garantie Flexipanel



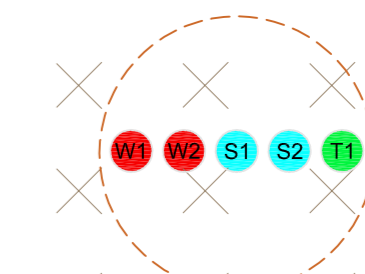
Detail 1  
1:5



Detail 2  
1:5



Detail 3  
1:5



Detail A  
1:5

Omschrijving  
SemperGreenwall  
Outdoor raam/deur details

Schaal  
1:20 / 1:5

Formaat  
A3

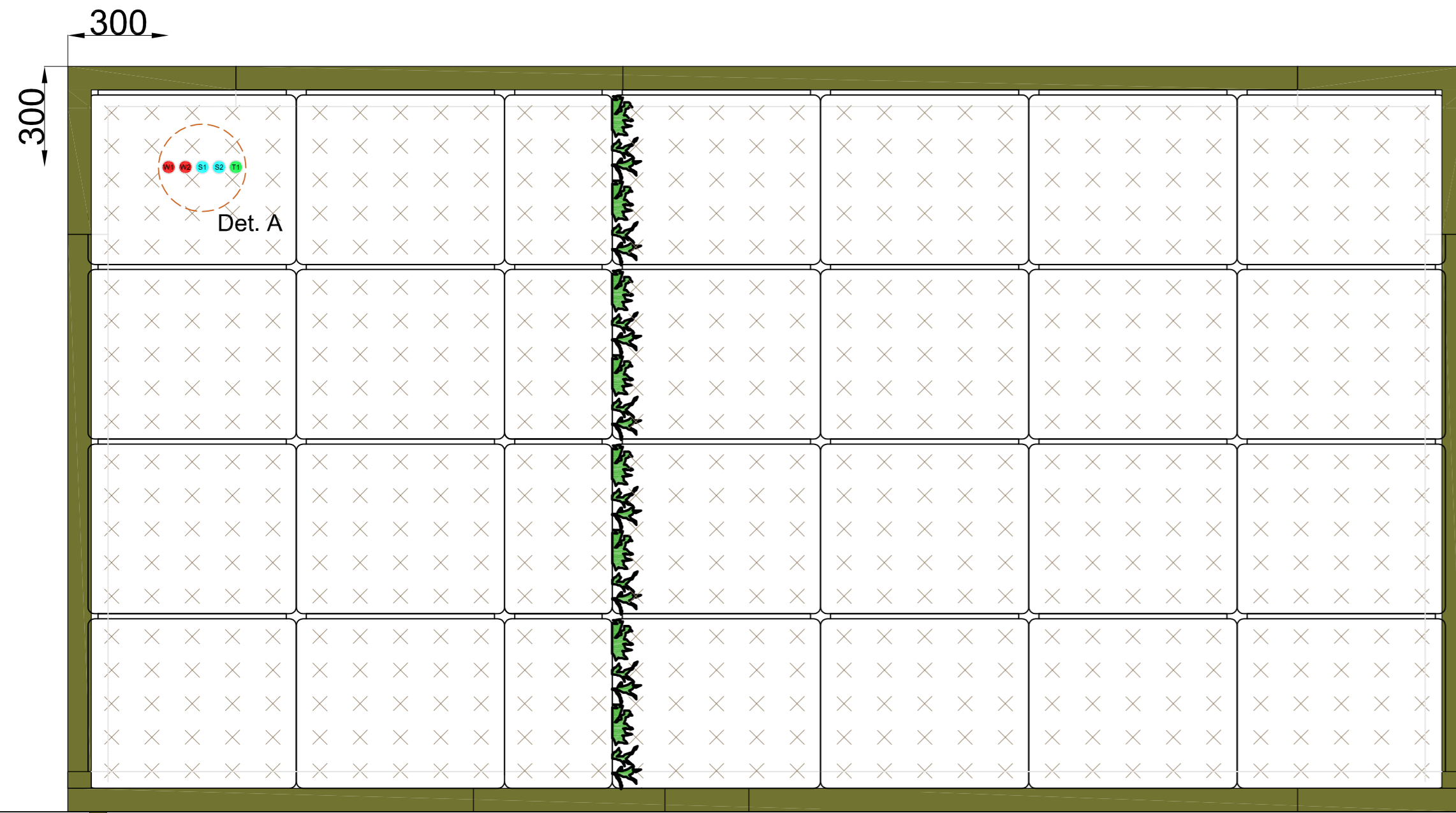
Datum  
15-05-2023

Tekening nr.  
SGWO-I02

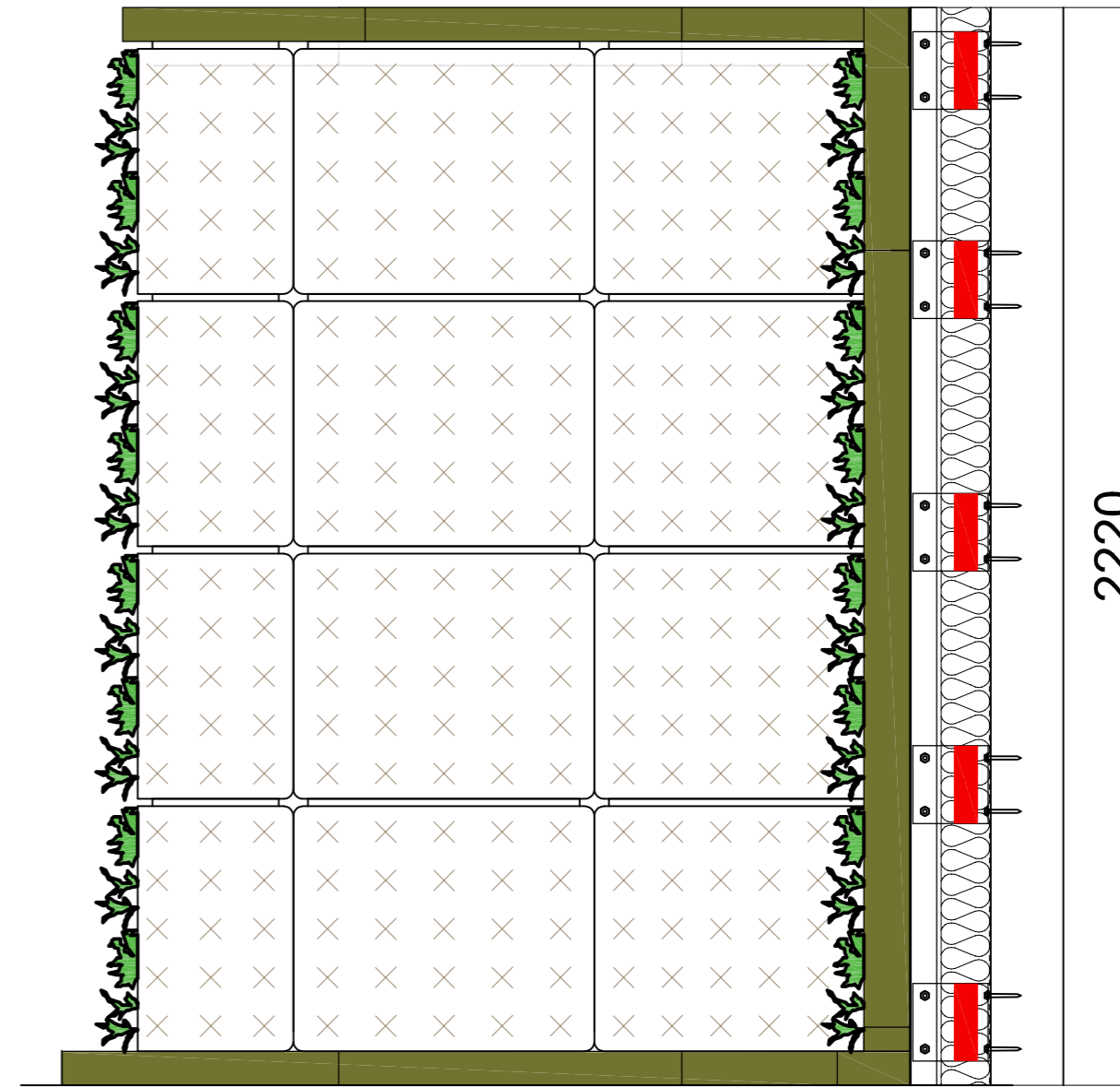


www.sempergreenwall.com



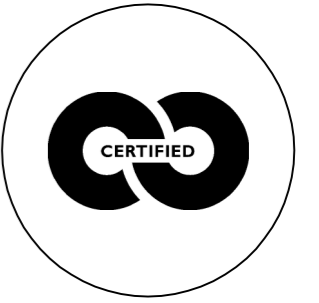


Aanzicht A



Aanzicht B

Cradle to Cradle gecertificeerd



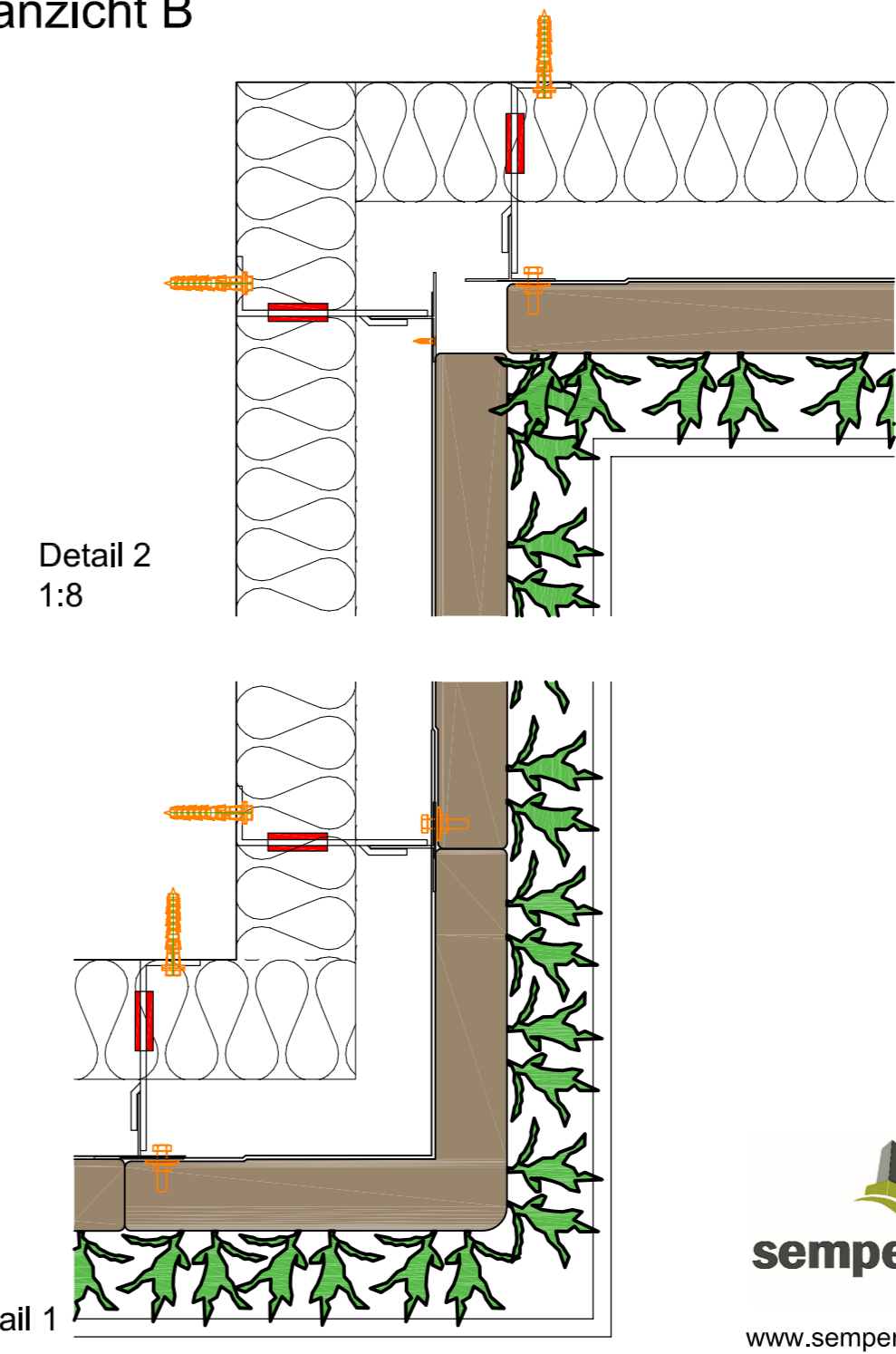
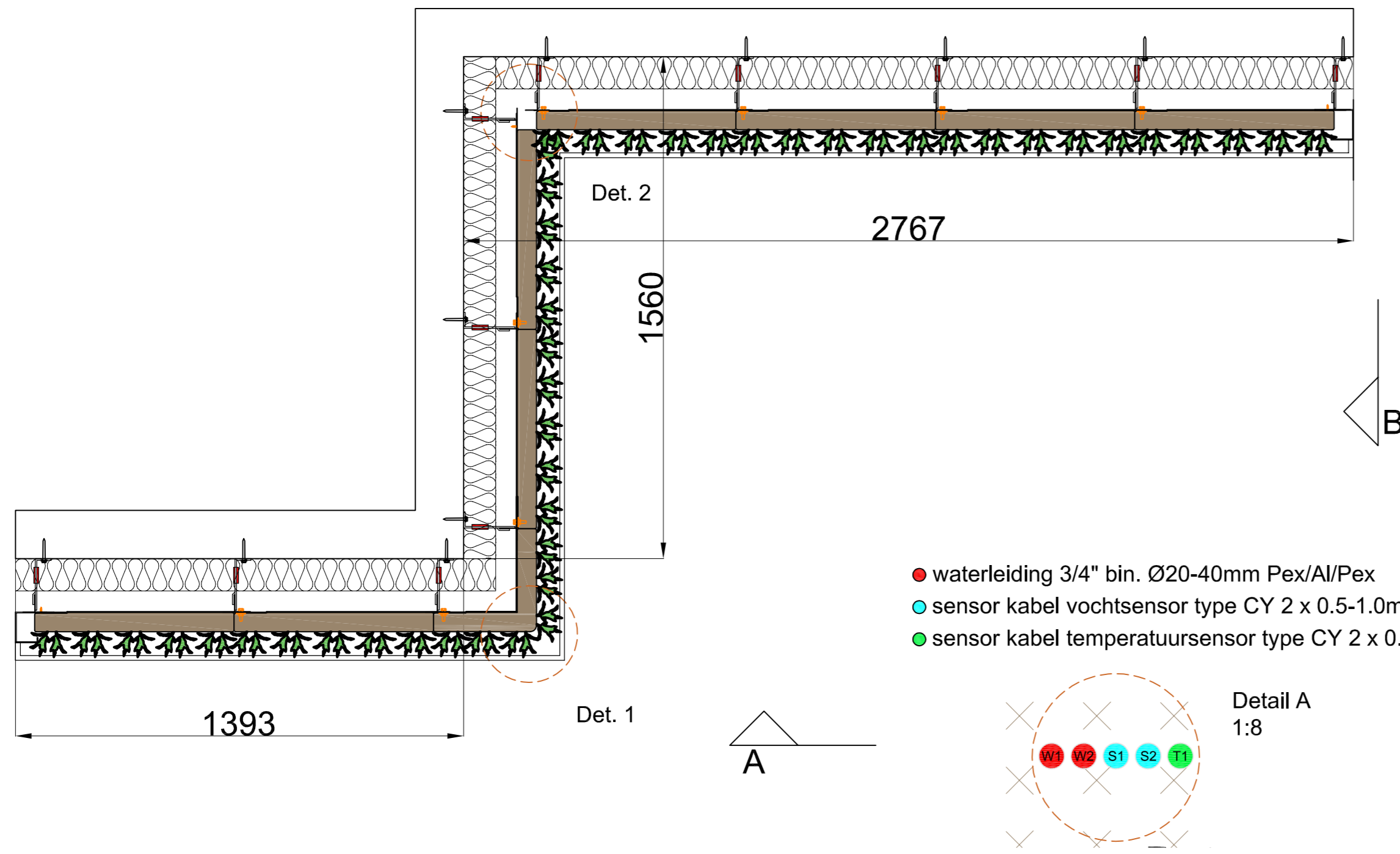
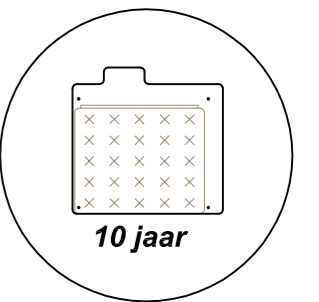
Max. verzadigd gewicht



Web-based irrigatiesysteem



Garantie Flexipanel



Detail 1 1:8

Detail 2 1:8

**Omschrijving**  
SemperGreenwall  
Outdoor hoekdetails

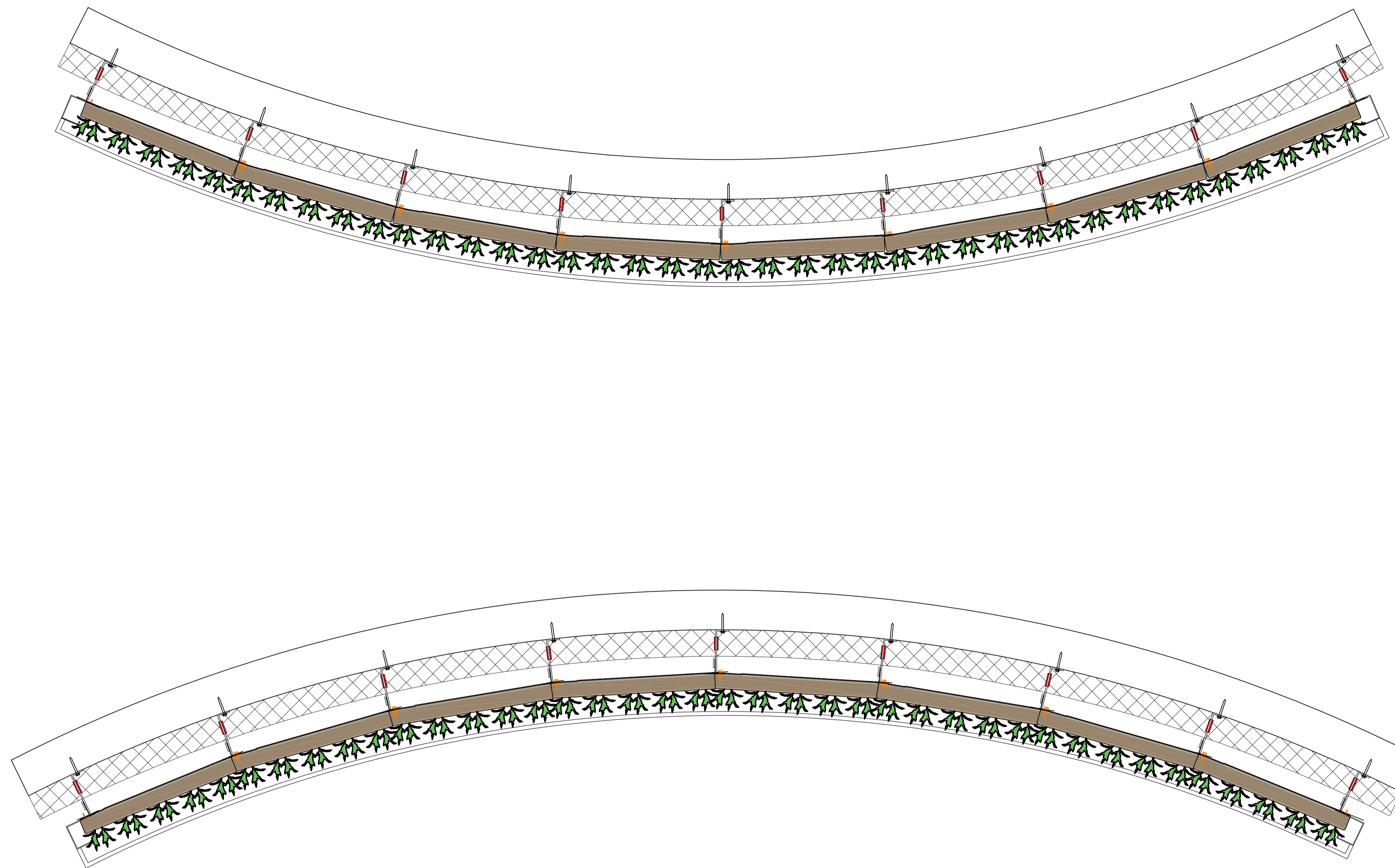
**Schaal**  
1:20 / 1:8

**Formaat**  
A3

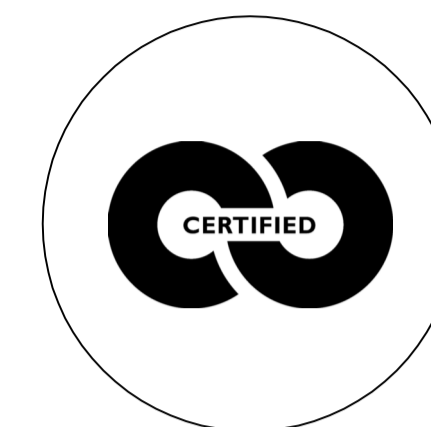
**Datum**  
15-05-2023

**Tekening nr.**  
SGWO-I03

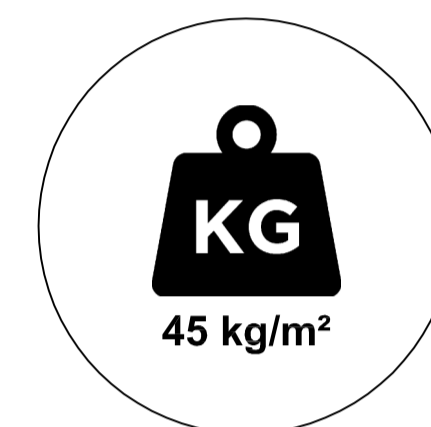
**sempergreen wall**  
www.sempergreenwall.com



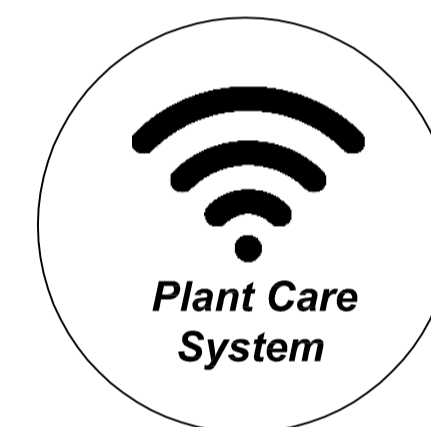
Cradle to Cradle  
gecertificeerd



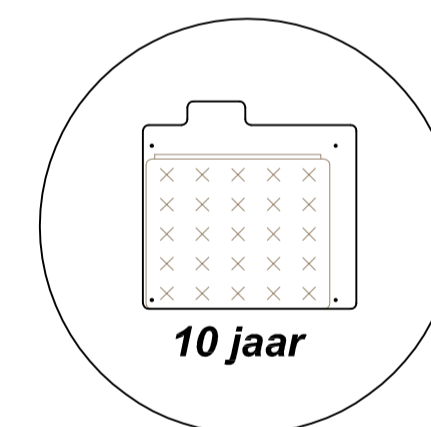
Max. verzadigd  
gewicht



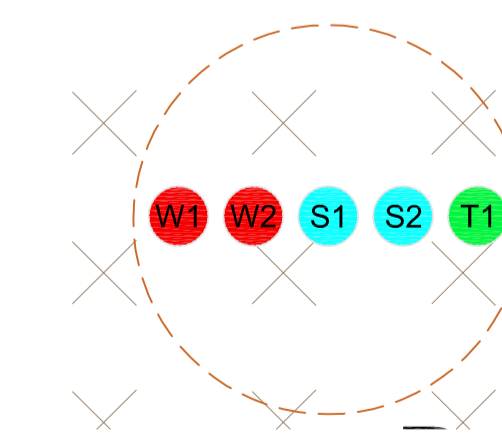
Web-based  
irrigatiesysteem



Garantie Flexipanel



- waterleiding 3/4" bin. Ø20-40mm Pex/Al/Pex
- sensor kabel vochtsensor type CY 2 x 0.5-1.0mm<sup>2</sup>
- sensor kabel temperatuursensor type CY 2 x 0.5-1.0mm<sup>2</sup>



Detail A  
1:5

**Omschrijving**  
SemperGreenwall  
Outdoor gebogen wand

**Schaal**  
1:20

**Formaat**  
A3

**Datum**  
15-05-2023

**Tekening nr.**  
SGWO-104

